

CONSTRUCTION & OPERATION



CONSTRUCTION

Construction is meticulously planned over several years to make sure it is safe, well managed and efficient.

Star of the South will be delivered in stages. Work starts on land, then moves offshore.

Key steps include:

- Preparing project sites for construction
- Delivering parts to ports or construction sites
- Installing cables underground on land and in the seabed
- Installing foundations offshore, then placing turbines or substations on top
- Checking and testing all installations before commissioning
- Demobilising and restoring construction sites.

Incredibly, some major activities like installing a turbine can happen in as little as one day. However, the full construction phase takes several years, depending on the size of the project.

OPERATION AND MAINTENANCE

Star of the South is expected to operate for at least 30 years.

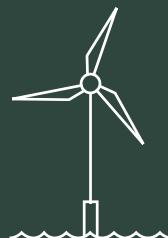
During this time, the wind farm and its transmission system will be monitored and operated remotely, reacting to wind speed, direction, market controls and incidents.

Local crews will visit the wind farm regularly to inspect equipment and carry out repairs and maintenance. This can involve the use of boats, drones and remotely operated underwater vehicles.

Larger boats may be used at times to replace parts or for major repairs, as required.

Onshore infrastructure and easements will be monitored and maintained as required using local crews.

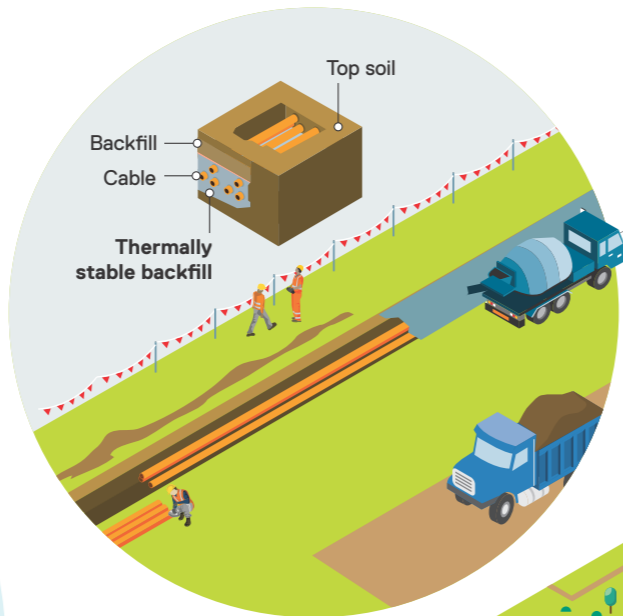
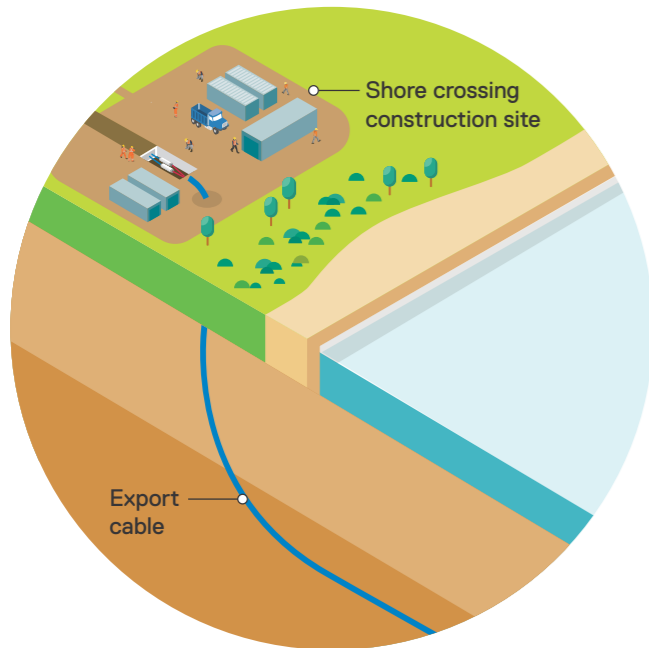
About Star of the South



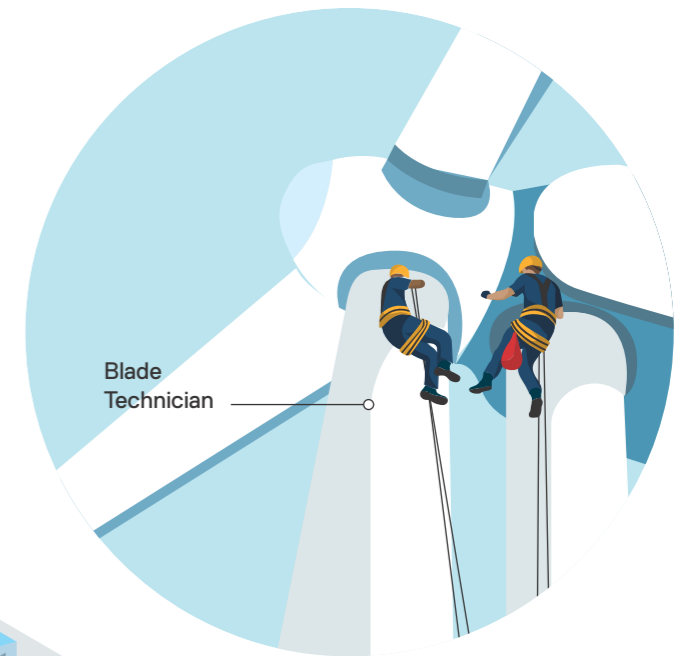
Star of the South is Australia's most advanced offshore wind energy project. It will harness strong and consistent Bass Strait winds to power 1.2 million homes, boost energy security, create local jobs and cut emissions.

Here's a snapshot of what's involved in constructing and operating Star of the South.

BRINGING CABLES TO SHORE
Cables are connected to land by pulling them underground, protecting the beach and dunes above.

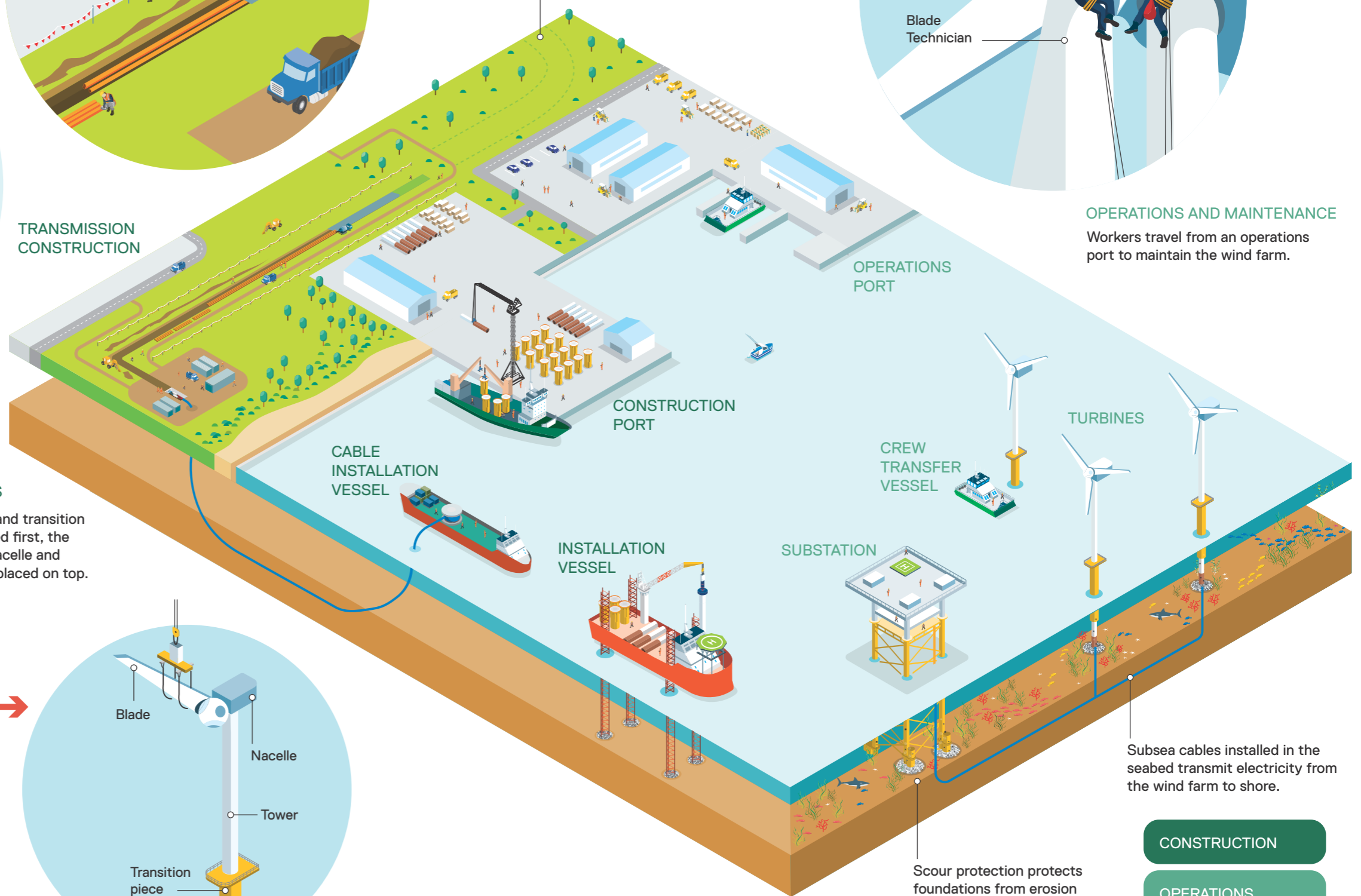


INSTALLING UNDERGROUND CABLES
Cables are installed underground in trenches, so infrastructure is not visible during operations.

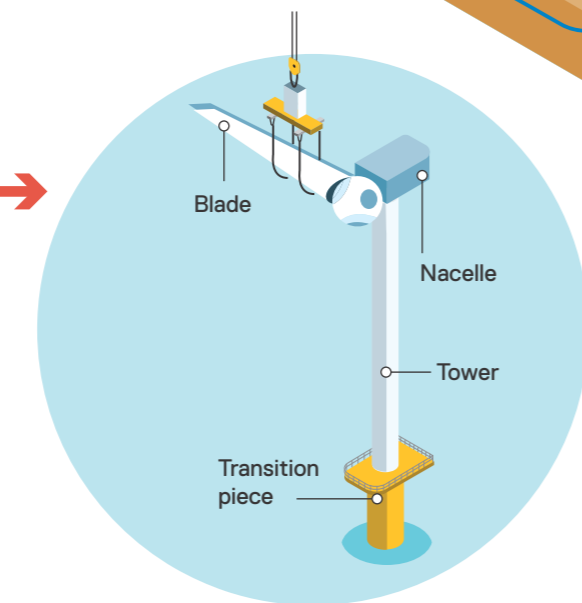
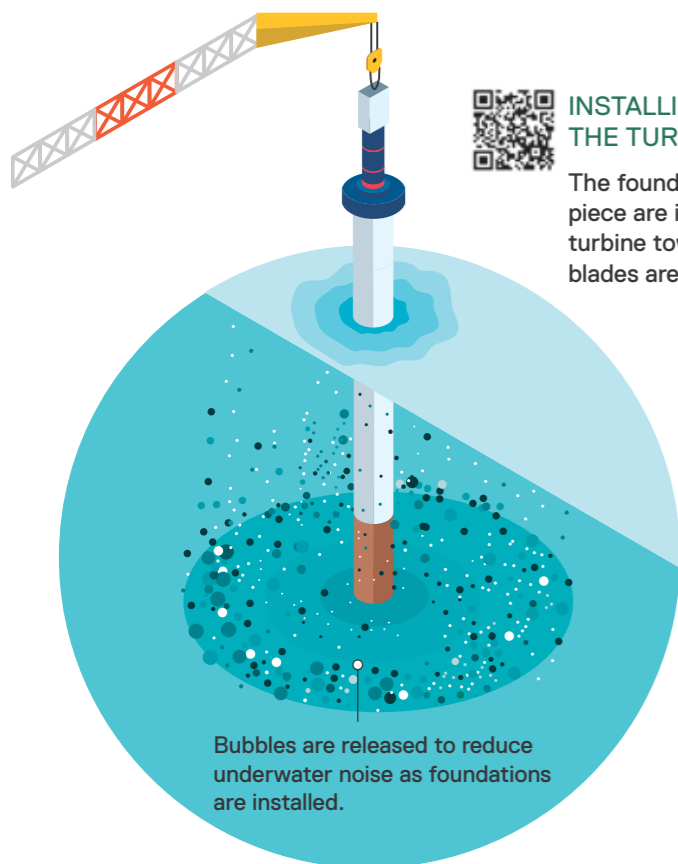


OPERATIONS AND MAINTENANCE
Workers travel from an operations port to maintain the wind farm.

TRANSMISSION CONSTRUCTION



INSTALLING THE TURBINES
The foundation and transition piece are installed first, the turbine tower, nacelle and blades are then placed on top.



Subsea cables installed in the seabed transmit electricity from the wind farm to shore.

CONSTRUCTION

OPERATIONS

Not to scale



SUPPORTING INFRASTRUCTURE

Star of the South will rely on other infrastructure during construction and operation.

Ports

Ports play an important role during both construction and operation - it's where a lot of the action happens.

During construction, deep-water commercial ports will store, assemble and load project components ready for installation. Day-to-day construction management, as well as ongoing operation and maintenance activities and jobs, will be based at a Gippsland port.

Transmission

Electricity from the wind farm needs to connect to the grid. VicGrid is developing a shared transmission line to connect offshore wind energy from Giffard, near the Gippsland coast, to the national grid.



Construction port in Germany

DECOMMISSIONING

At the end of its life, Star of the South will be decommissioned.

This involves removing infrastructure such as turbines, foundations, offshore substations and cables according to a decommissioning plan approved by the Offshore Infrastructure Regulator.

In some cases, it may be better to leave certain infrastructure in place, for example if it has become home to marine life. We'll assess this closer to the time.

Our decommissioning plan will detail proposed activities, methods, potential impacts and management measures, and follow strict guidelines to protect the marine environment.

The plan must be approved before construction starts. It will also be updated over time to meet regulations in place when decommissioning occurs, expected in the 2060s or later.

We are responsible for all decommissioning costs and must show that we have the capacity to fund this before construction begins.

MANAGEMENT PLAN

A management plan will guide project activities.

This is a legally enforceable document that details how project activities will be carried out at each phase. It is required under the Offshore Electricity Infrastructure Act (OEI Act), must be approved before construction starts and be kept up to date across the project's life.

We'll develop a management plan for Star of the South in consultation with stakeholders. It will set out how we'll keep workers and the public safe, make sure infrastructure is installed and maintained properly, and protect the environment.

The Offshore Infrastructure Regulator reviews, approves and enforces the plan.

A PROJECT BY



starofthesouth.com.au
1800 340 340
info@southerlyten.com.au
310 Commercial Road, Yarram

LinkedIn Star of the South
Facebook Star of the South Project
Interpreter Call 13 14 50

We acknowledge the people of the
Gunalkurnal nation as the original
custodians of Country and pay
respect to Elders past and present.

