

## ENVIRONMENTAL ASSESSMENT VISUAL CHANGES

The Star of the South offshore wind farm will be visible from parts of the coast. All transmission cables from the wind farm to Giffard will be underground.

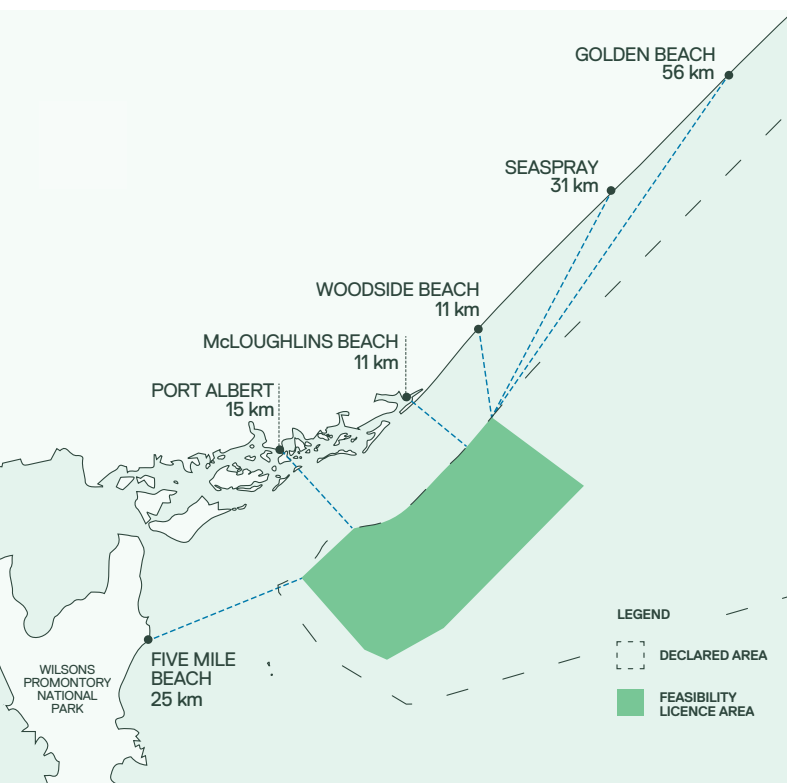
### WHAT WILL I SEE?

What you see will depend on your distance from the wind farm, the weather conditions and the time of day.

The wind farm area is located 10 km to 40 km offshore. Turbines closer to shore will be easier to see. Those further away may appear as small shapes on the horizon or not be visible at all.

Overall, the wind farm is expected to be:

- **Most visible** at Woodside Beach, McLoughlins Beach, Manns Beach, Robertsons Beach and Port Albert
- **Less visible** at Seaspray and parts of Wilsons Promontory
- **Not visible** from inland towns such as Yarram, Alberton, Woodside, and places that are further away like Golden Beach and Tidal River.



### MINIMISING VISUAL EFFECTS

We've looked for ways to reduce the visual presence of the wind farm in the seascape. So far, we've:

- Reduced the maximum number of turbines from 400 down to 147
- Selected a site where low-lying islands help screen views from some towns
- Located the wind farm away from major population centers
- Designed all transmission cables to be underground, avoiding impacts close to homes
- Committed to using only the minimum lighting required for safety, to reduce visibility at night
- Committed to turbine colours which help them blend in with the horizon and sky.

The wind farm layout will be refined further through a detailed design phase. This may present further opportunities to reduce visual effects.

**Going offshore**  
Going offshore helps reduce visual and social impacts by placing infrastructure far from homes and conserving valuable land for other uses.

### Further reading

Detailed information on this topic is available in Star of the South's environmental assessment documentation:



- EIS Chapter 22 - Seascape, landscape and visual
- EIS Chapter 20 - Social
- EIS Chapter 21 - Business and tourism



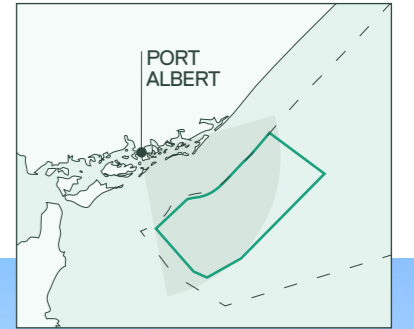
## STUDYING THE SEASCAPE

Our seascape, landscape and visual assessment looks at how Star of the South may change coastal character, landscapes and views.

It includes a series of photomontages - real photos with project infrastructure added digitally by technical specialists. These images provide an accurate representation of the project's scale and visibility from 28 locations during the day and 15 at night. The below examples show the maximum turbine height of 350 m.

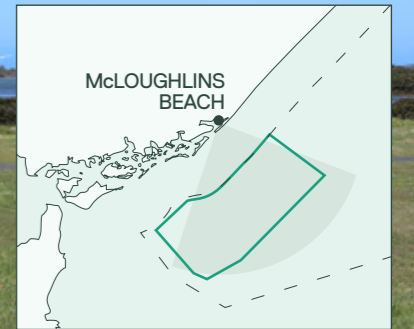
### Example views

Port Albert (15.5 km)

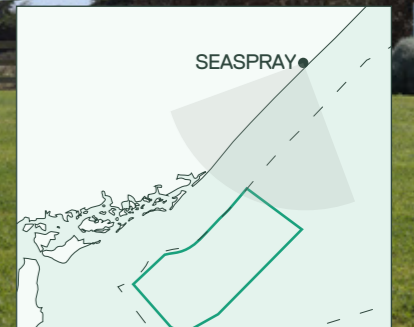


**Viewing the images**  
As the turbines are some distance from shore, they can be hard to see in smaller images. Photomontages are best viewed at A3 size or larger. Visit our Gippsland office, attend a community session, or go online to see full size images.

McLoughlins Beach (11.7 km)



Seaspray (31 km)



### Did you know?

That turbines are visible from other Gippsland beaches, including here at Cape Paterson.

## ASSESSING THE MAXIMUM DESIGN

We've taken a conservative approach to assessing potential impacts. For visual, this meant assessing the largest and most visible wind farm design scenarios:



The **maximum number** of turbines (147 turbines up to 271 m high)



The **maximum height** of turbines (113 turbines up to 350 m high)



**Lighting** on every turbine, even though this is considered unlikely.

## LIGHTING

Two types of safety lights are expected to be installed on some turbines.

- **Aviation safety lighting** is likely to be visible from some locations onshore when the sky is dark and clear. This lighting is designed to be visible to aircraft, has a higher brightness level and is positioned high on the turbines.
- **Maritime safety lighting** will not be visible from land. This lighting is designed to be visible to boats navigating the wind farm, has a lower brightness level and is positioned on platforms above the water.

Lighting regulations have not yet been determined by Australian authorities. Based on overseas regulations, we do not expect aviation lighting will be required on every turbine.

In practice, we will use only the minimum lighting required for safety and will aim to reduce its visibility from the coast as much as possible.

## About Star of the South

Star of the South is Australia's most advanced offshore wind energy project. It will harness strong and consistent Bass Strait winds to power 1.2 million homes, cut emissions and create regional jobs.

It includes:

- An offshore wind farm located in Commonwealth waters off the Gippsland coast
- A transmission system of offshore substations and underground cables to transmit electricity from the turbines to the grid.

A PROJECT BY



starofthesouth.com.au  
1800 340 340  
info@southerlyten.com.au  
310 Commercial Road, Yarram

LinkedIn Star of the South  
Facebook Star of the South Project  
Interpreter Call 13 14 50

We acknowledge the people of the Gunakurnal nation as the original custodians of Country and pay respect to Elders past and present.

