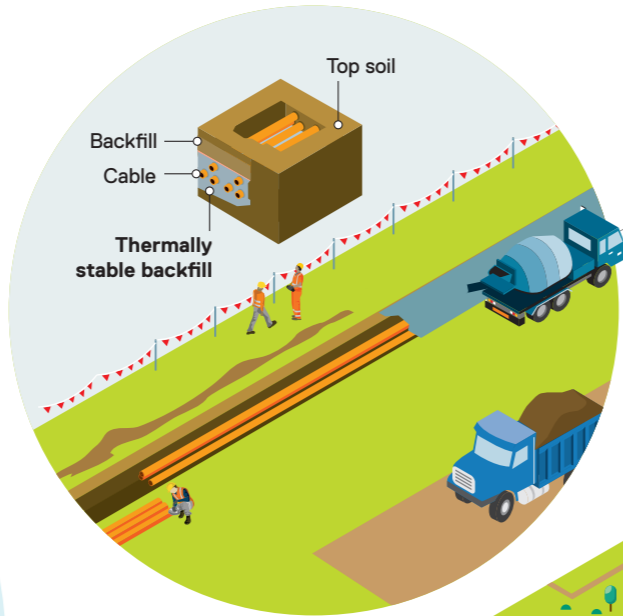
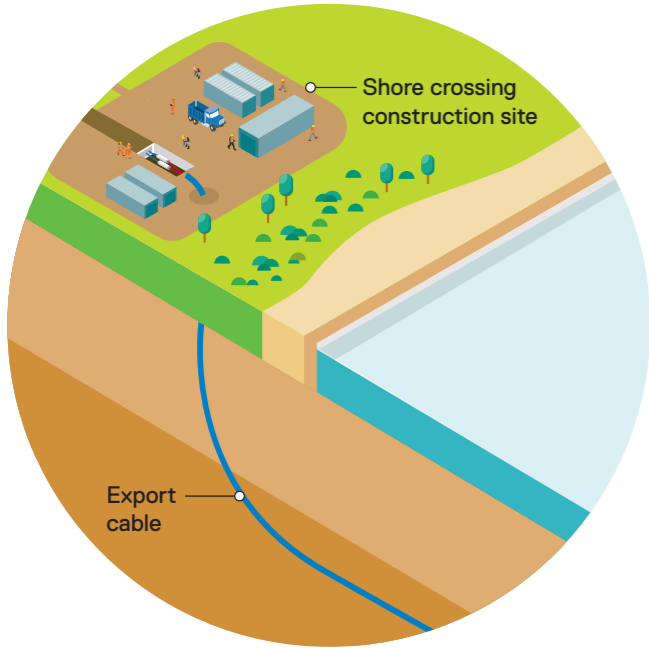
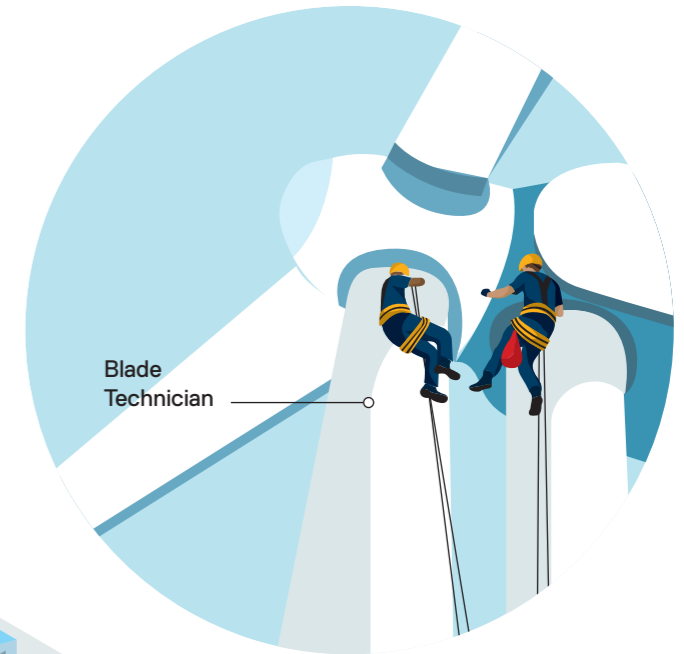


Here's a snapshot of what's involved in constructing and operating Star of the South.

**BRINGING CABLES TO SHORE**  
 Cables are connected to land by pulling them underground, protecting the beach and dunes above.

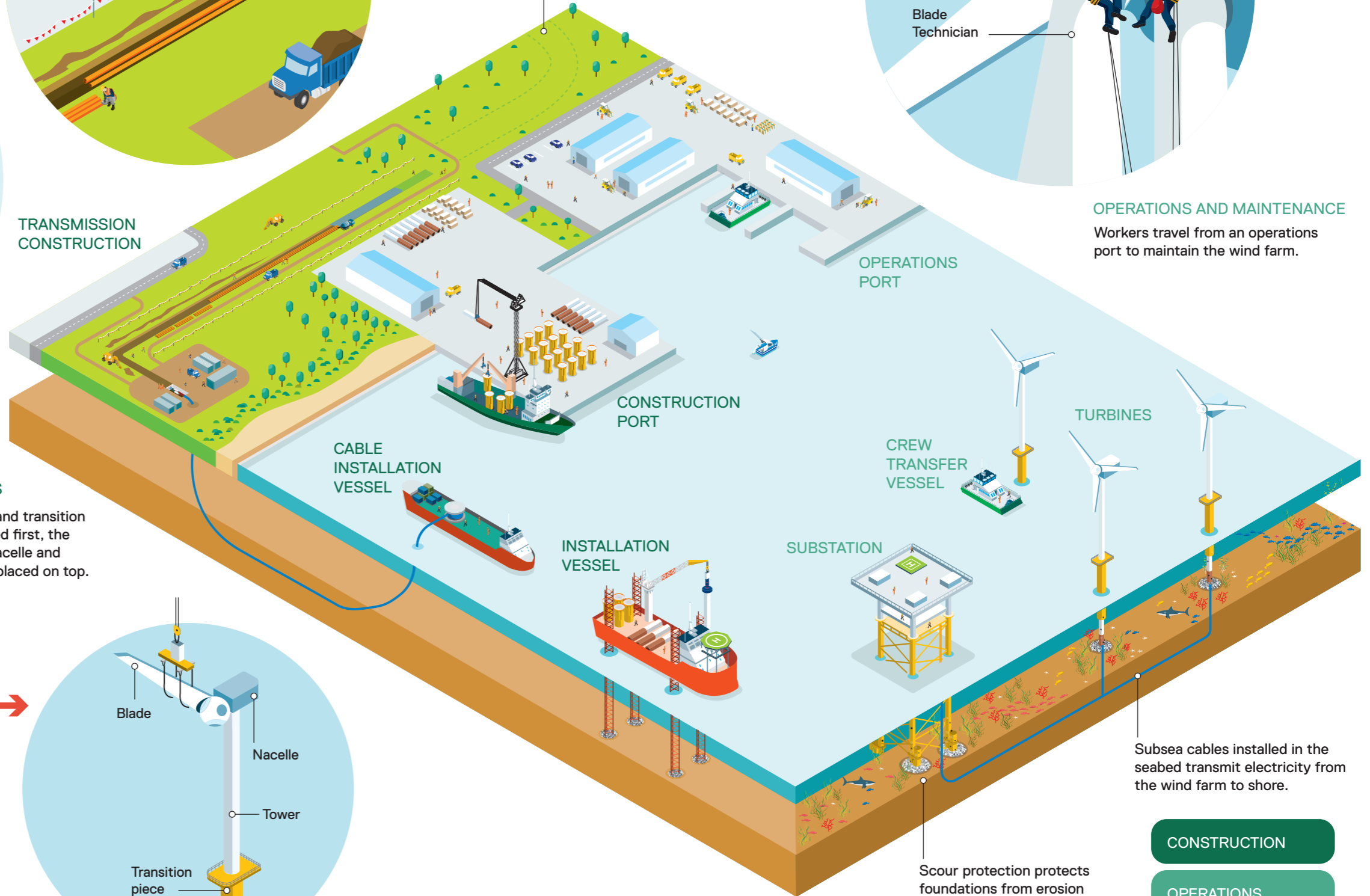


**INSTALLING UNDERGROUND CABLES**  
 Cables are installed underground in trenches, so infrastructure is not visible during operations.

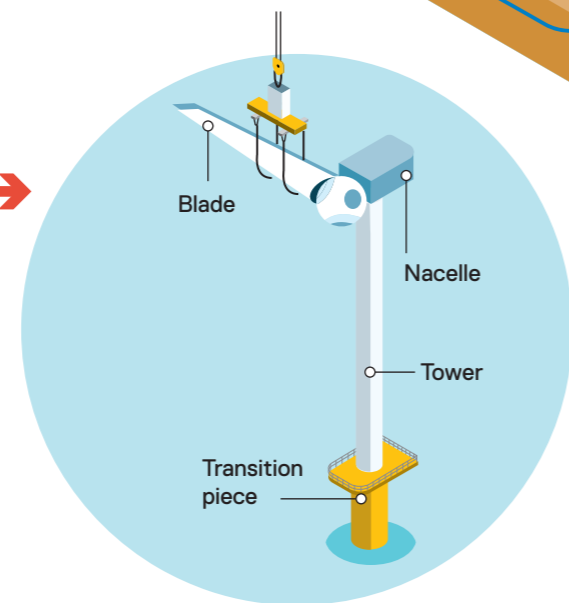
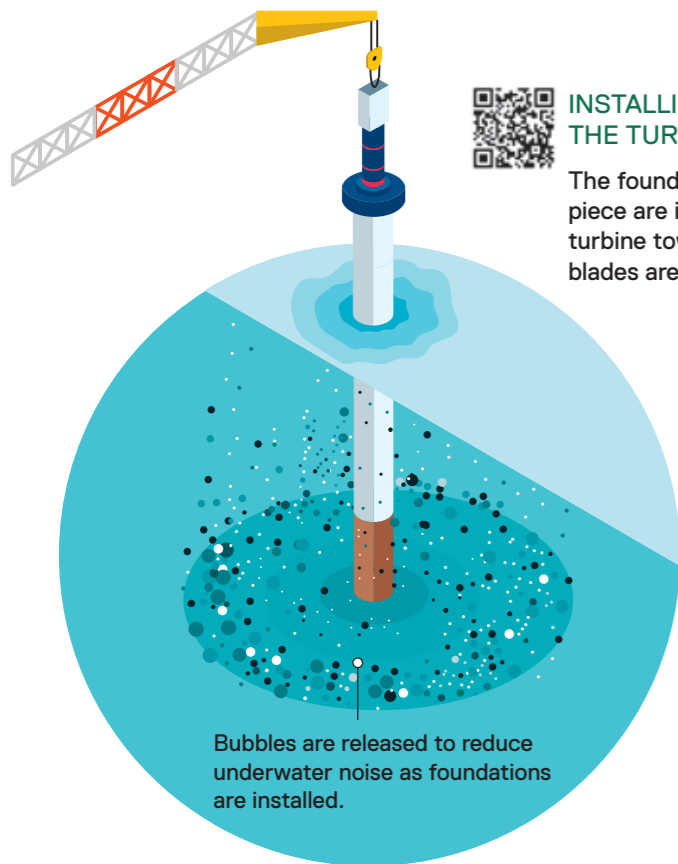


**OPERATIONS AND MAINTENANCE**  
 Workers travel from an operations port to maintain the wind farm.

**TRANSMISSION CONSTRUCTION**



**INSTALLING THE TURBINES**  
 The foundation and transition piece are installed first, the turbine tower, nacelle and blades are then placed on top.



Subsea cables installed in the seabed transmit electricity from the wind farm to shore.

**CONSTRUCTION**

**OPERATIONS**

Not to scale