

COMMUNITY ADVISORY GROUP

MEETING #29 – 25 SEPTEMBER 2024



ACKNOWLEDGEMENT OF COUNTRY

We acknowledge the Gunaikurnai people as the traditional custodians of the land and pay respect to their elders past and present

AGENDA

1. WELCOME

2. STANDING ITEMS AND ACTIONS

- Apologies
- Minutes and action items
- Declaration of potential conflicts

3. FOCUS TOPIC

- Renewable Energy Impact and Readiness Study
 - June 2024, prepared by Urban Enterprise for South Gippsland Shire Council and Latrobe City Council

4. BREAK (10 MINUTES)

5. WHAT'S HAPPENING ON THE PROJECT

6. WHAT'S HAPPENING IN THE COMMUNITY

7. OTHER BUSINESS

- Other questions or feedback
- Key messages
- Suggestions for future agenda items
- Next meeting – 6 November 2024

8. MEETING CLOSE

FOCUS TOPIC

RENEWABLE ENERGY IMPACT AND READINESS STUDY

JUNE 2024, PREPARED BY URBAN ENTERPRISE FOR SOUTH GIPPSLAND SHIRE COUNCIL AND LATROBE CITY COUNCIL



South Gippsland and Latrobe City Renewable Energy Impact and Readiness Study

Christian Stefani – Manager Regional Partnerships



South Gippsland
Shire Council

Today's focus

Supporting the
transition to new
energy

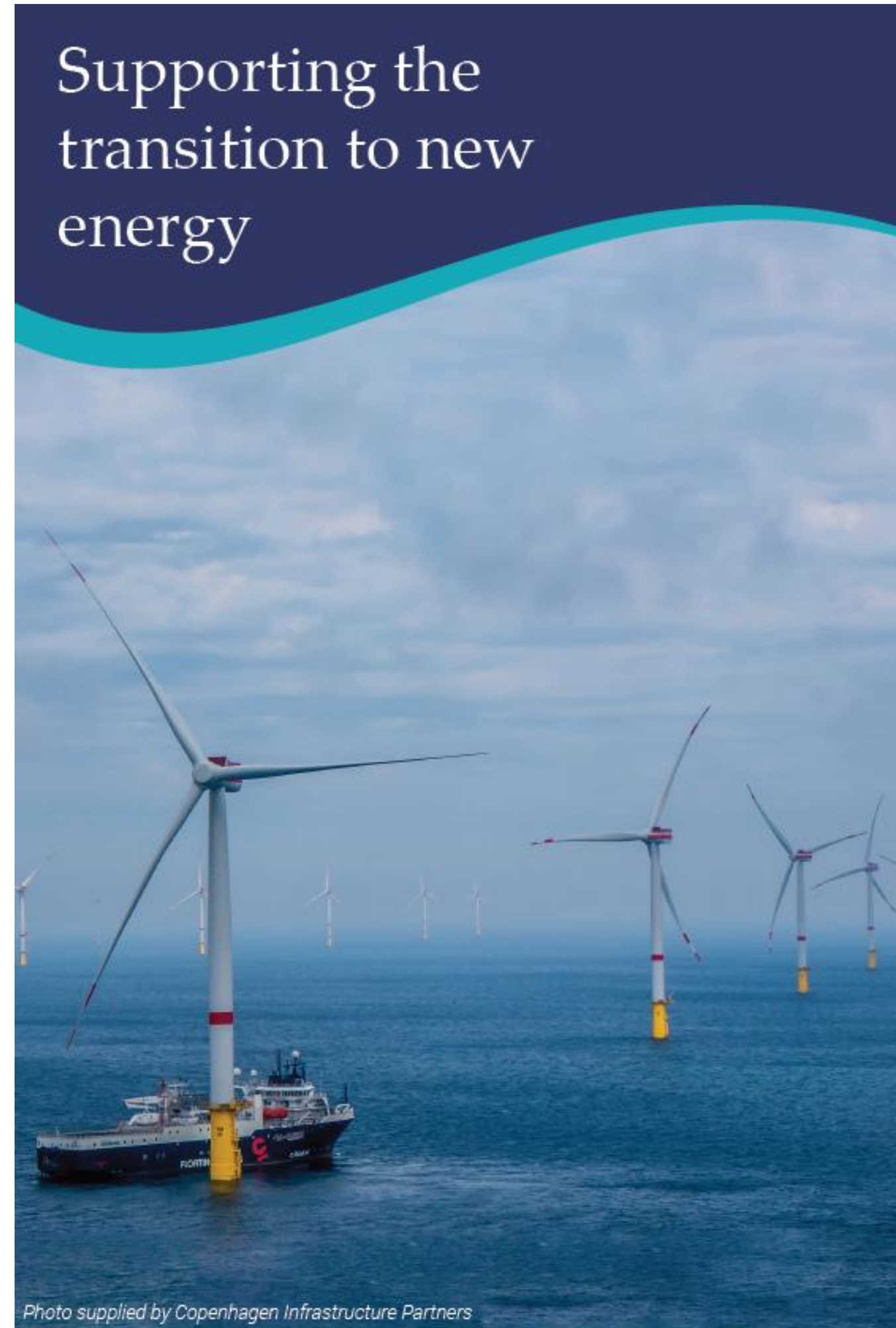


Photo supplied by Copenhagen Infrastructure Partners

- South Gippsland overview
- Economy and Key Industries
- Preparing for Growth
- Renewable Energy Impact and Readiness

South Gippsland, Economy & Key Industries



South Gippsland

- Resident population of 31,000 growing to 36,000 by 2036*
- Over 1.2 million visitors, annually
- 28+ communities
- Unique in comparison to other LGAs - approximately 50 per cent of residents live in rural areas outside the township centres



Economy and Key Industries

- \$4.7 Billion Economy
- 3,800 Businesses & 12,000 workforce
- Agricultural production is our largest industry and employer - 1,500 businesses and 3,000 jobs alone
- Other key industries - manufacturing, construction, health and tourism
- High level of resident workers & low unemployment

Preparing for Growth

- Impact and Readiness Study
 - Supply chains, jobs & skills, Housing and Infrastructure
- Industrial Land Supply Review
- Regional Precincts and Partnerships Program – application for ‘Land and Infrastructure Plan’

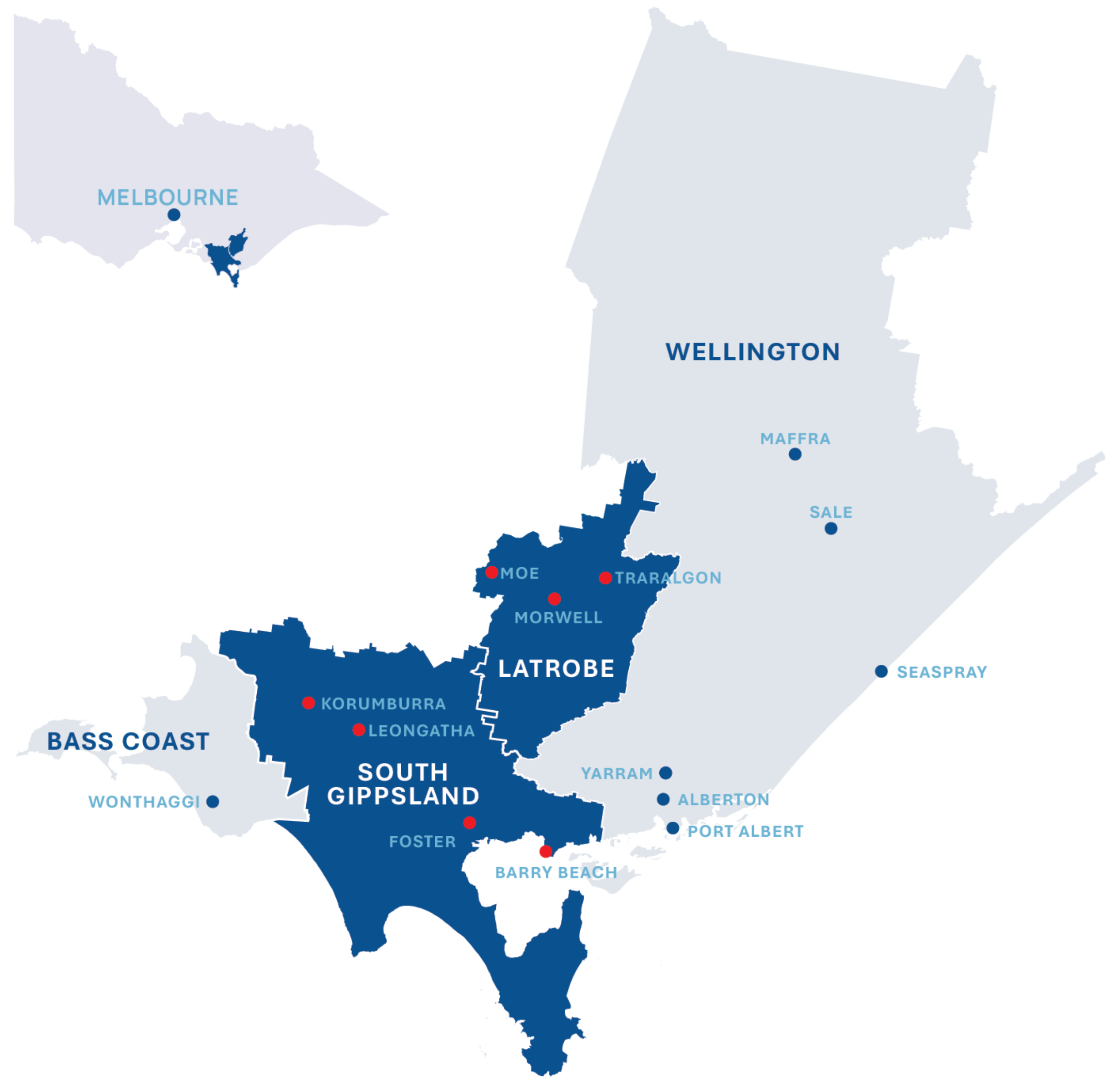


Renewable Energy Impact and Readiness Study



Strategically plan for renewable energy investment to ensure regional 'readiness':

- Supply-chain (business & land)
- Jobs & skills
- Housing & accommodation
- Infrastructure (ports, roads)



Renewable Projects in Gippsland

30+ Projects across Gippsland

Potential to deliver around 25 GW of renewable energy

Cumulative construction phases expected to extend to 2040.

Vic targets: at least 2GW by 2032, 4GW by 2035 & 9GW by 2040.



12 Offshore wind farms



2 Onshore wind farms



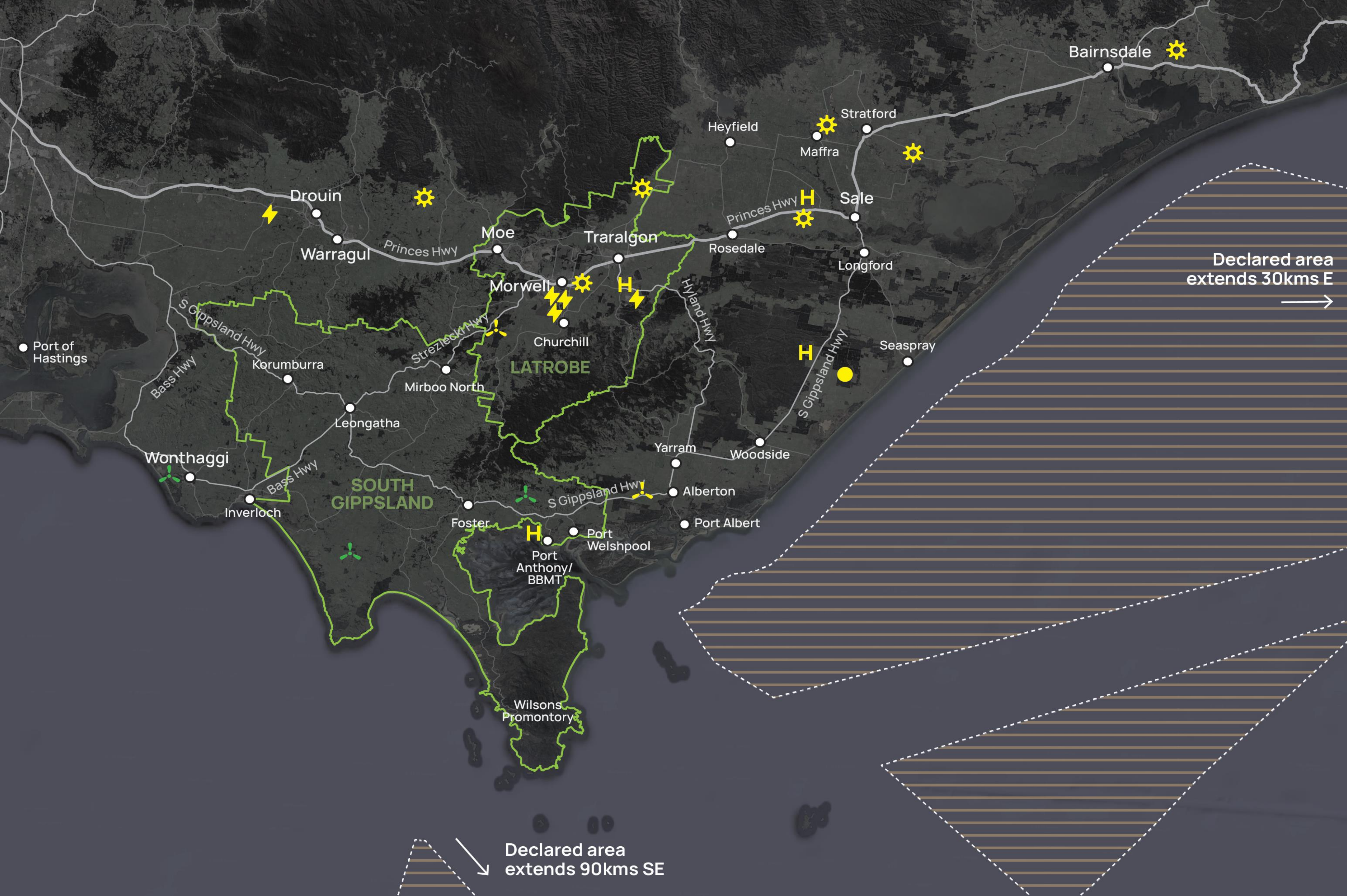
10 solar farms



5 battery storage



4 Hydrogen



LEGEND

Offshore Electricity Infrastructure Declared Area

Proposed Energy Project Type

- Onshore Wind Farm
- Solar Farm
- Battery Storage
- Hydrogen
- Gippsland Multi-energy Proposal

Operational Energy Project

- Wind Farm

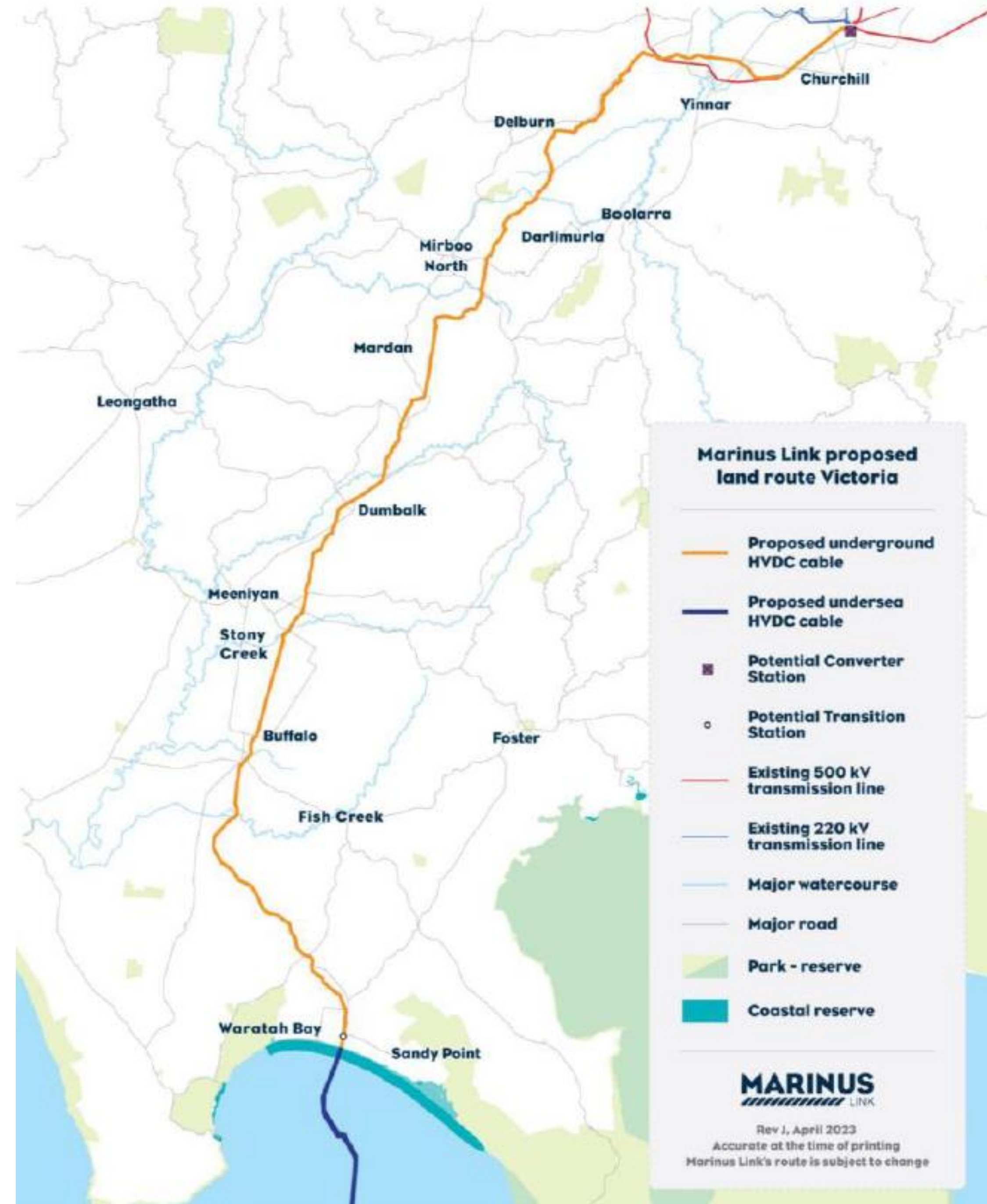
Other Infrastructure

- Major Road
- Other Road
- LGA Boundary

*Project locations are indicative only



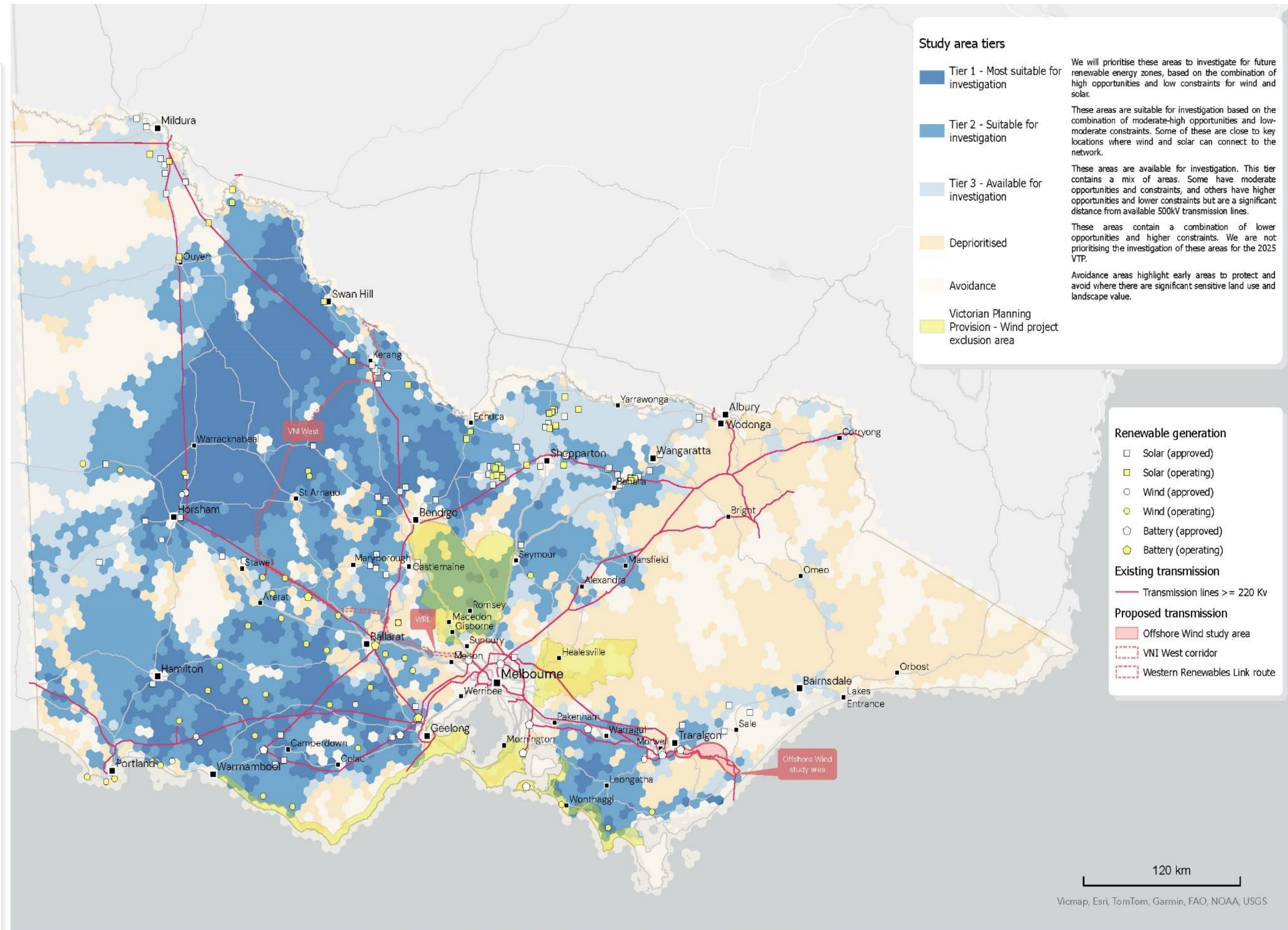
Marinus Link



Onshore Wind

Draft Victorian Transmission Plan Guidelines

Renewable Energy Zone Study Area Map



Draft Victorian Transmission Plan Guidelines Geographical areas for further investigation

This study area is the first step in a process to identify Victoria's renewable energy zones, which will occupy a much smaller area. Datasets including renewables/agriculture compatibility, and detailed local and regional information and feedback, will inform final decisions.

Map Disclaimer: This information is generated from VicGrid and Victorian Government data and may be of assistance to you. However, VicGrid does not guarantee that the publication is without flaw of any kind and therefore disclaims all liability for error, loss or damage which may arise from reliance upon it. This map shows a proposed publicly announced alignment for Western Renewables Link, VNI West and offshore wind transmission as of the date of publication. These alignments have not completed necessary planning and environmental approvals and therefore should be considered indicative only at this time.

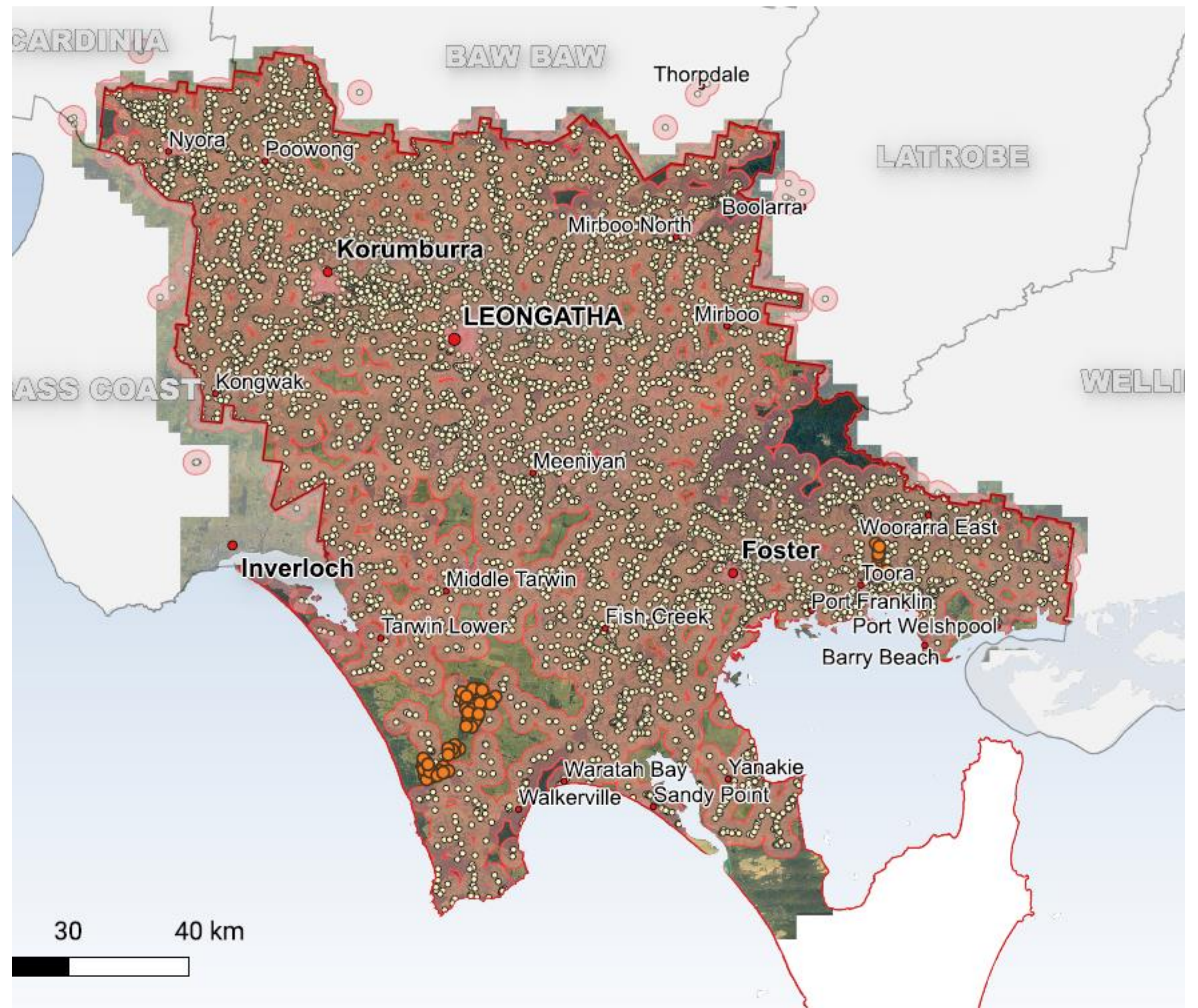
Date published: 17th July 2024 Map projection: VicGrid GDA 2020 Scale: @ A3

Onshore Wind

Draft Victorian Transmission
Plan Guidelines

Renewable Energy Zone Study
Area Map

Council submission

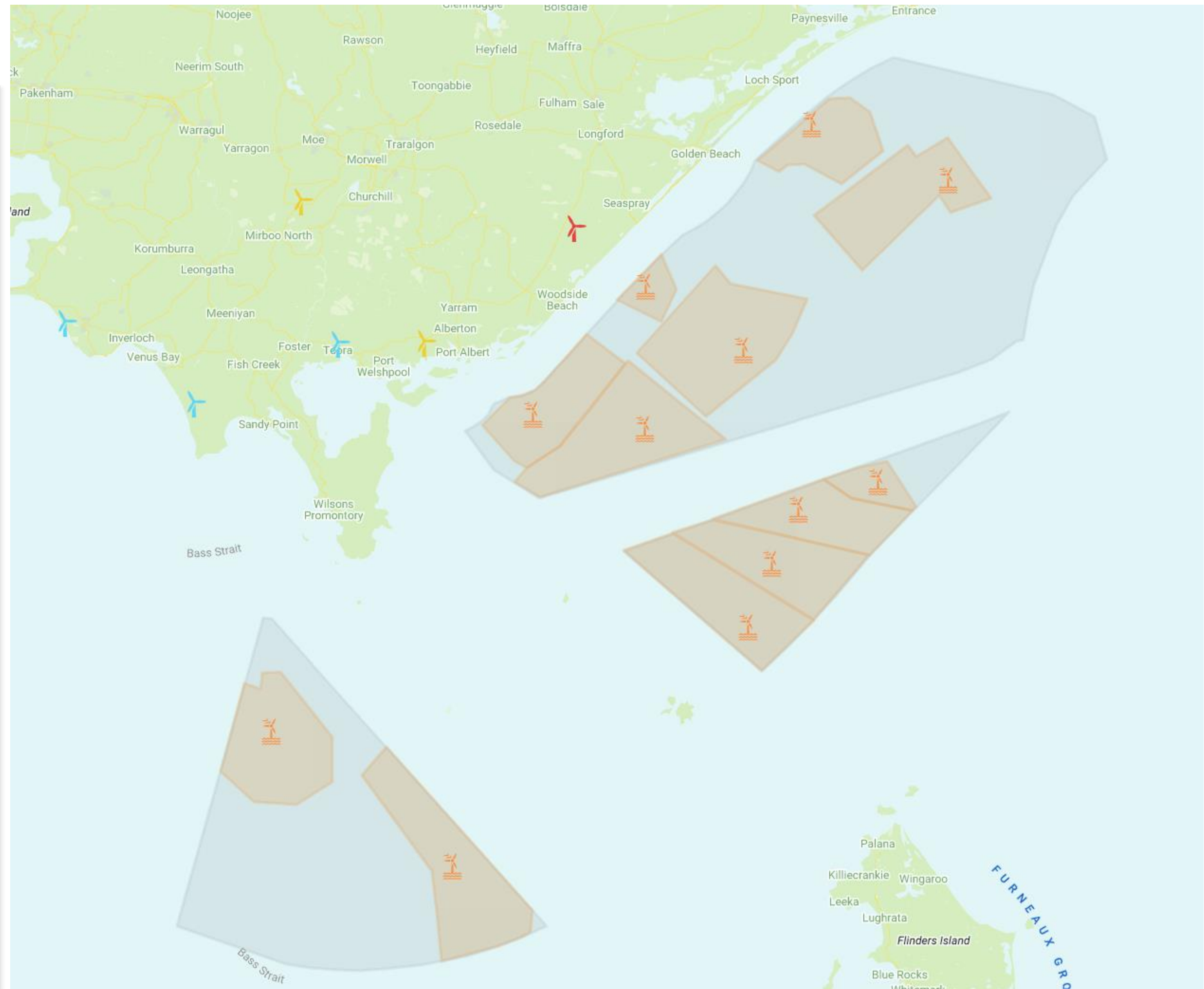


Offshore Wind

Feasibility Licenses Announced
-12 projects 25GW

30+ years of Operations and
Maintenance at Barry Beach
ports

1,500 jobs





Supply chains

Supply Chain

- Global
- Local and Regional
- Indirect/Supporting

- Support existing businesses to integrate and participate - Star of the South example – 200 businesses identified as potential suppliers

- Local – uncertainty around how to participate or when it will happen

- Industrial Land Supply and being ‘land ready’ is critical

Supply Chain

- Latrobe City – industry specialisation in engineering, manufacturing, civil construction
- South Gippsland - existing industry specialisations need to productively operate alongside renewable energy sector
(e.g. agriculture, tourism, construction)
- Industrial land – concentrated in Morwell
- South Gippsland Industrial Land – adjacent ports land (550Ha) and undersupply in Korumburra and Leongatha

Jobs and Skills



Jobs and Skills

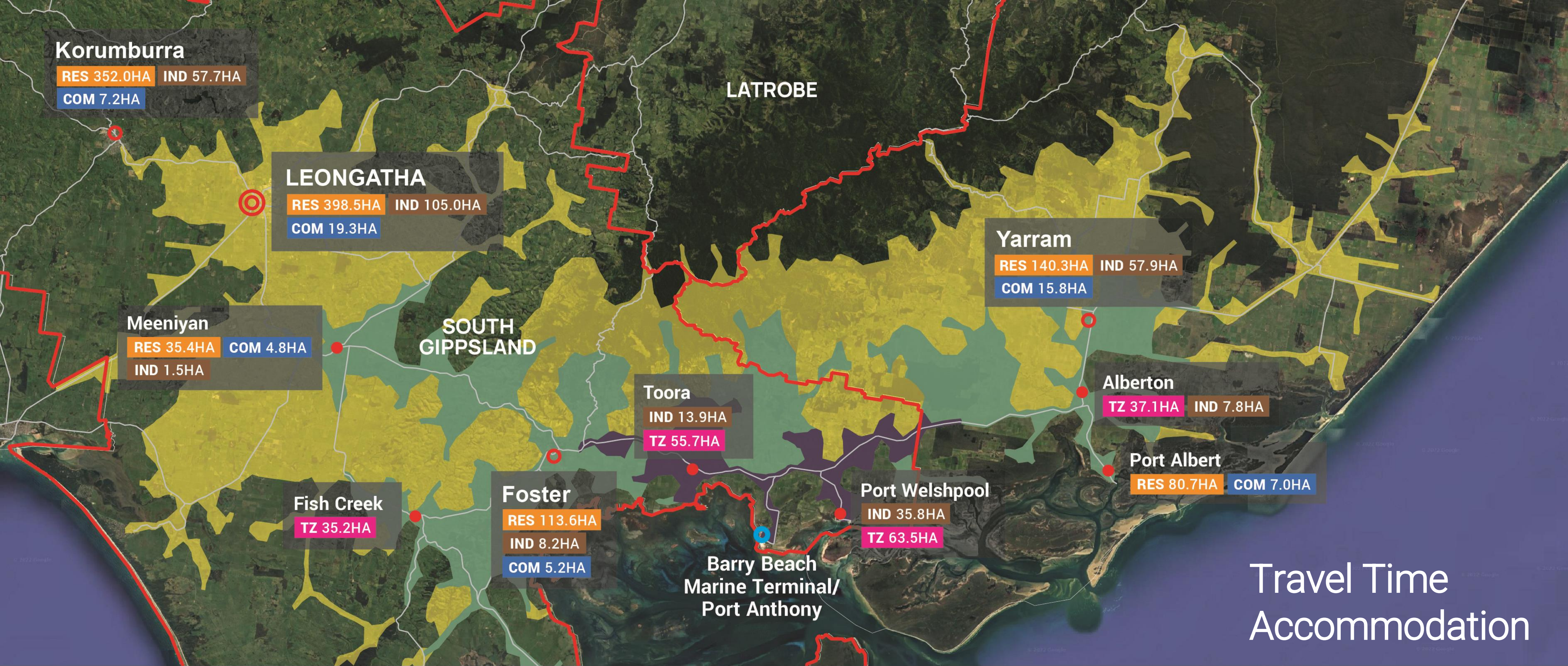
- Mix of technical, professional, and lower skilled job roles identified in the pipeline of projects
- 8,000 during construction and 1,500 during operations
- Partner with education and training providers – employment pathways
- Labour availability is a challenge with competition for workforce
- Proximity to Ports will be a driver

Housing & Accommodation



Housing & Accommodation

- Key worker housing – rental tenure, short term accommodation, availability, etc.
- Rental housing – proximate to Ports preferred (Foster, Yarram, Leongatha).
- Appropriately zoned land and the need for it to be ‘market ready’
- Example - Regional Precincts and Partnerships Program application for Land and Infrastructure Planning Support



Land Supply Type

- RES** General Residential Zoned Land
- IND** Industrial Zoned Land
- COM** Commercial Zoned Land
- TZ** Township Zoned Land

Distance from Port Anthony

- Less than 20 minutes
- 20 to 40 minutes
- 40 to 60 minutes

Key Townships

- Large
- Medium
- Small

- LGA Boundary
- Road



Infrastructure



What's next?

- 47 actions to be progressively implemented.
- Ongoing partnership, collaboration and coordination with regional Councils.
- Ongoing engagement and communication with industry and the community.
- Monitoring and managing land supply.





Thank you!

9 Smith Street (Private Bag 4) Leongatha VIC 3953 | Ph: 5662 9200 | Fax: 5662 3754

Email: council@southgippsland.vic.gov.au Website: www.southgippsland.vic.gov.au

Facebook: www.facebook.com/southgippslandshirecouncil

BREAK

WHAT'S BEEN HAPPENING ON THE PROJECT

EVENTS AND PRESENTATIONS

- Australian Wind Energy, Melbourne
- Australian Clean Energy Summit, Sydney
- Job Skills Expo, Lardner Park
- Sale Catholic College Careers Expo
- Maffra Secondary College Careers and Information Expo
- Gippsland and Barwon South-East Planning Teams
- Coal to Offshore Wind Case Study Launch, Morwell
- Federation University Open Day 2024, Churchill
- Yallourn Training and Careers Fair
- Wonthaggi Jobs Expo
- South-East Australia Transport Strategy, Sale

- Broadening Horizons, Yarram Secondary College
- EIANZ 2024 Impact Assessment Symposium, Brisbane
- Gippsland New Energy Conference 2024, Traralgon
- Gippsland Offshore Wind Alliance launch, Traralgon
- Gippsland Women in New Energy breakfast, Traralgon
- Gippy Youth New Energy Jobs Summit, Morwell
- Australia Wind Industry Summit, Melbourne
- Seafood Directions, Hobart
- Inspiring Young People Luncheon, Leongatha
- International Conference for Ocean Energy, Melbourne



SITE VISIT

LOY YANG A AND HAZELWOOD TERMINAL STATIONS

Thanks to the AusNet team for
hosting and informing our visit.

- Reflections?



WHAT'S COMING UP

EVENTS AND PRESENTATIONS

- AFR Energy & Climate Summit, Sydney
- All Energy Australia, MCEC Melbourne
- Collaborative engagement with other Gippsland offshore wind developers.

With events at:

- Seaspray
- Foster
- Traralgon
- Yarram



WHAT'S HAPPENING IN THE COMMUNITY

COMMUNITY UPDATES – ALL MEMBERS

- What are you hearing?
- What are the hot topics in your local area?
- Would you like to give a more in-depth update at the next meeting on an upcoming event?



WHAT'S
GOING
ON?

OTHER BUSINESS

OTHER BUSINESS

Other questions and feedback?

Suggestions for future agenda items

- Email / call Jason or Paul
- List on the CAG Member Teams Page 'files'

**Next meeting – 4pm to 6pm,
6 November
Yarram (Venue TBC)**

Date (subject to change)	Location	Topic (tentative, subject to change)
11 Dec. 2024	Rosedale, The Rosey Pub	End of year
Feb. 2025	(TBC)	(TBC)

Thank you for your participation



PROJECTS BY



info@southerlyten.com.au
southerlyten.com.au

LinkedIn: [Southernly Ten](#)

Office: (03) 9108 4000
Community: 1800 340 340