

# COMMUNITY ADVISORY GROUP

Meeting #36 – 13 November 2025



A landscape photograph featuring a field of tall, green grass in the foreground, blowing in the wind. The background is a vast sky with large, soft clouds, some of which are illuminated with a warm, golden light, suggesting a sunset or sunrise. The overall mood is serene and natural.

We acknowledge the Gunaikurnai people as the traditional custodians of the land and pay respect to their elders past and present.

# Agenda

1. Welcome and Acknowledgement,
  - Standing items and actions
  - Apologies
  - Minutes and action items
  - Declaration of potential conflicts
2. Brief Focus Topic:
  - VicGrid refined alignment
3. Brief Focus Topic:
  - Victorian State Government Auction deferral
  - CAG Schedule for 2026
4. Break
5. Brief Focus Topic:
  - Gippsland Offshore Wind Alliance, Sector Plan update
6. What's happening on the project
7. What's happening in the community
8. Other business
  - Other questions or feedback
  - Key messages
  - Next meeting – Wednesday 10 December, CAG End of Year Dinner
9. Meeting close

# VICGRID REFINED ALIGNMENT

Brief focus topic

# Gippsland offshore wind 2 GW transmission project

Refinement update

November 2025



# Acknowledgement of Country

We acknowledge and respect Traditional Owners as the original custodians of land and waters, their unique ability to care for Country and deep spiritual connection to it.

We honour Elders past and present whose knowledge and wisdom has ensured the continuation of culture and traditional practices.

VicGrid is committed to genuinely partnering with Victorian Traditional Owners and Victoria's Aboriginal community to progress their aspirations.

# The corridor and draft preferred route

*Defining a broad study area allowed us to then identify a corridor to keep investigating as we work towards confirming the preferred route and easement for the new transmission.*

## **To define the corridor, we:**

- Mapped homes, environmental values and areas with technical challenges
- Considered possible pathways for the new transmission line
- Applied our refinement criteria (guiding principles) to compare and assess these options

# Identifying the draft preferred route

<b>Our guiding principles</b>	<b>Applying our principles to the draft preferred route</b>
<p><b>We aim to:</b></p> <ul style="list-style-type: none"><li>• Minimise impacts on landholders and communities, including views and amenity.</li><li>• Minimise impacts on the natural environment.</li><li>• Respect and protect First Peoples' cultural values and aspirations.</li><li>• Minimise impacts on existing and future land use.</li><li>• Keep costs impacts to energy consumers and generators as low as possible.</li><li>• Reduce engineering challenges during construction and avoid clashes with existing infrastructure.</li></ul>	<p><b>When selecting a draft preferred route, we aimed to:</b></p> <ul style="list-style-type: none"><li>• Minimise impacts on homes, farmland and sensitive environments like Merriman Creek.</li><li>• Avoid areas with significant biodiversity values.</li><li>• Align with existing infrastructure like the Basslink transmission line and the Saline Wastewater Outfall Pipeline.</li><li>• Reduce visual and amenity impacts.</li><li>• Limit costs to consumers and complexity in construction.</li><li>• Avoid cultural heritage sites where possible.</li></ul>

Clear decision-making criteria ensure the route is logical and respectful of community, environmental and cultural values.



# Landholder surveys and feedback

*Landholders shared important information about their properties. We'll continue to use this information and seek input from landholders to inform the next phases of refinement.*

- Information about agricultural types and practices
- Known populations of local flora and fauna species
- Scenic places and important viewpoints
- Historical features and connections
- How, where and when water moves through properties
- Investment in revegetation at the property through local Landcare groups
- Approaches to land management practices
- Location of key infrastructure.

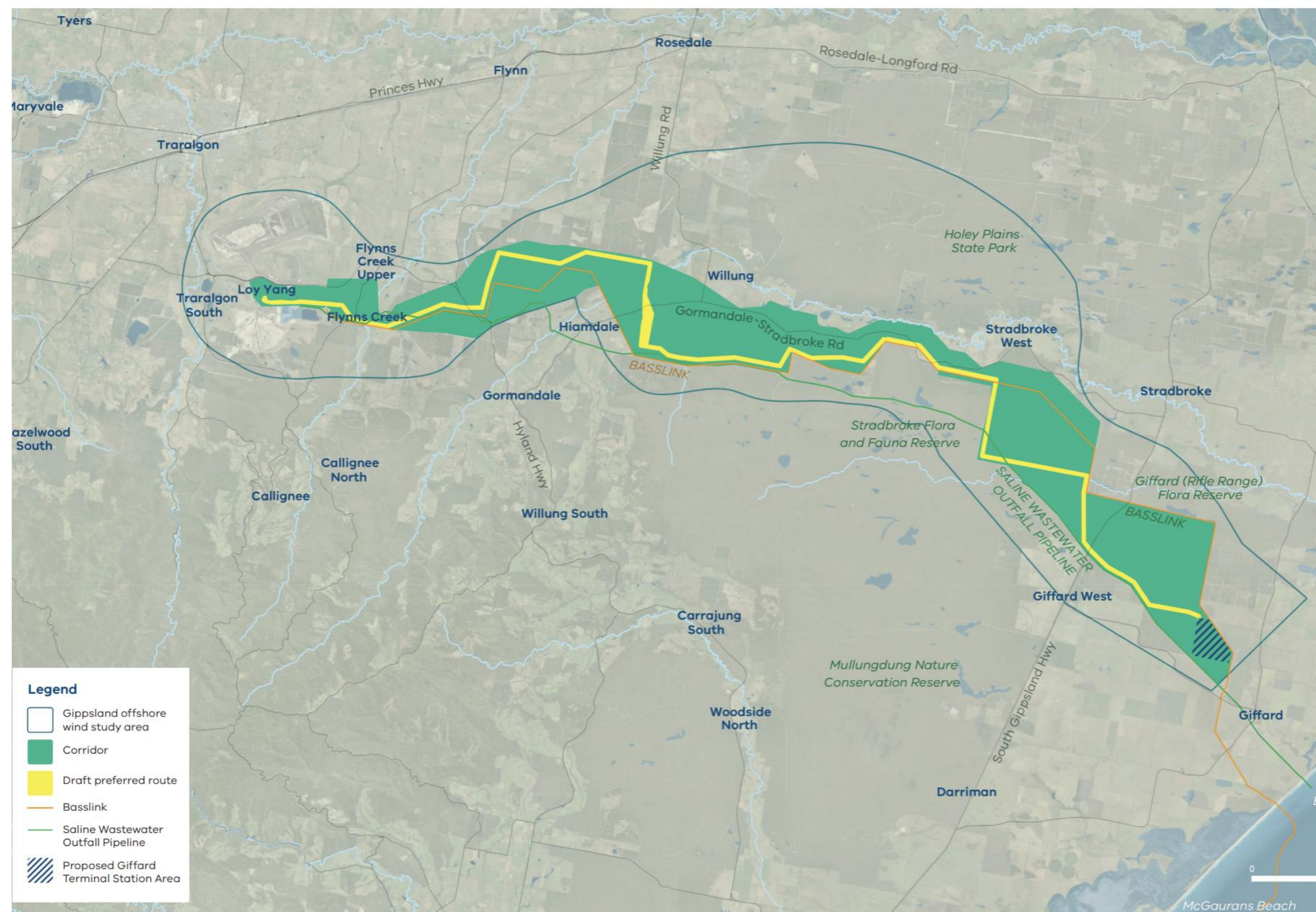


**51**

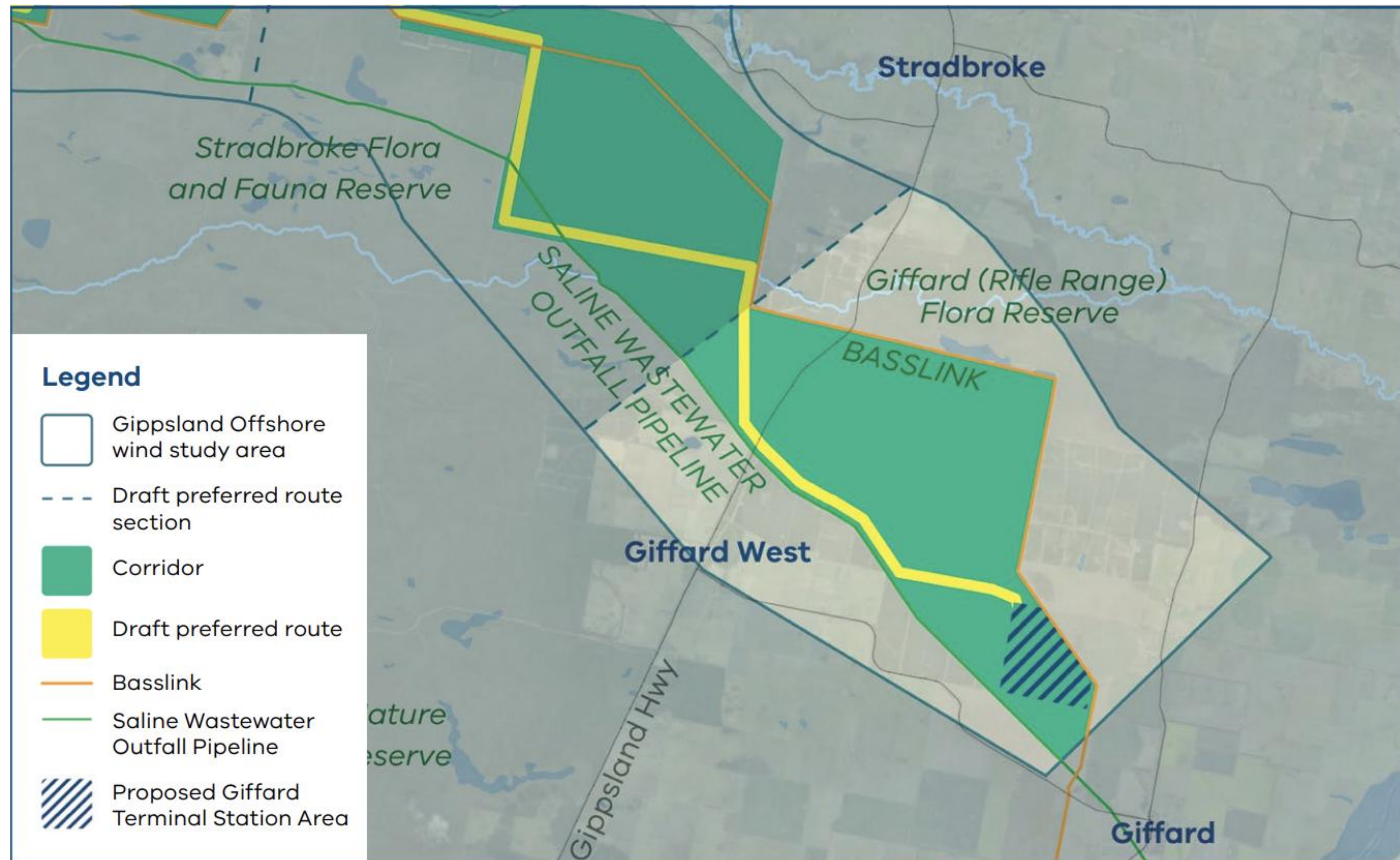
Landholder  
surveys

# The corridor and draft preferred route

- Reduces impacts on homes and environmental values
- Aligns with existing infrastructure as much as practical
- Travels through predominantly forestry and plantation



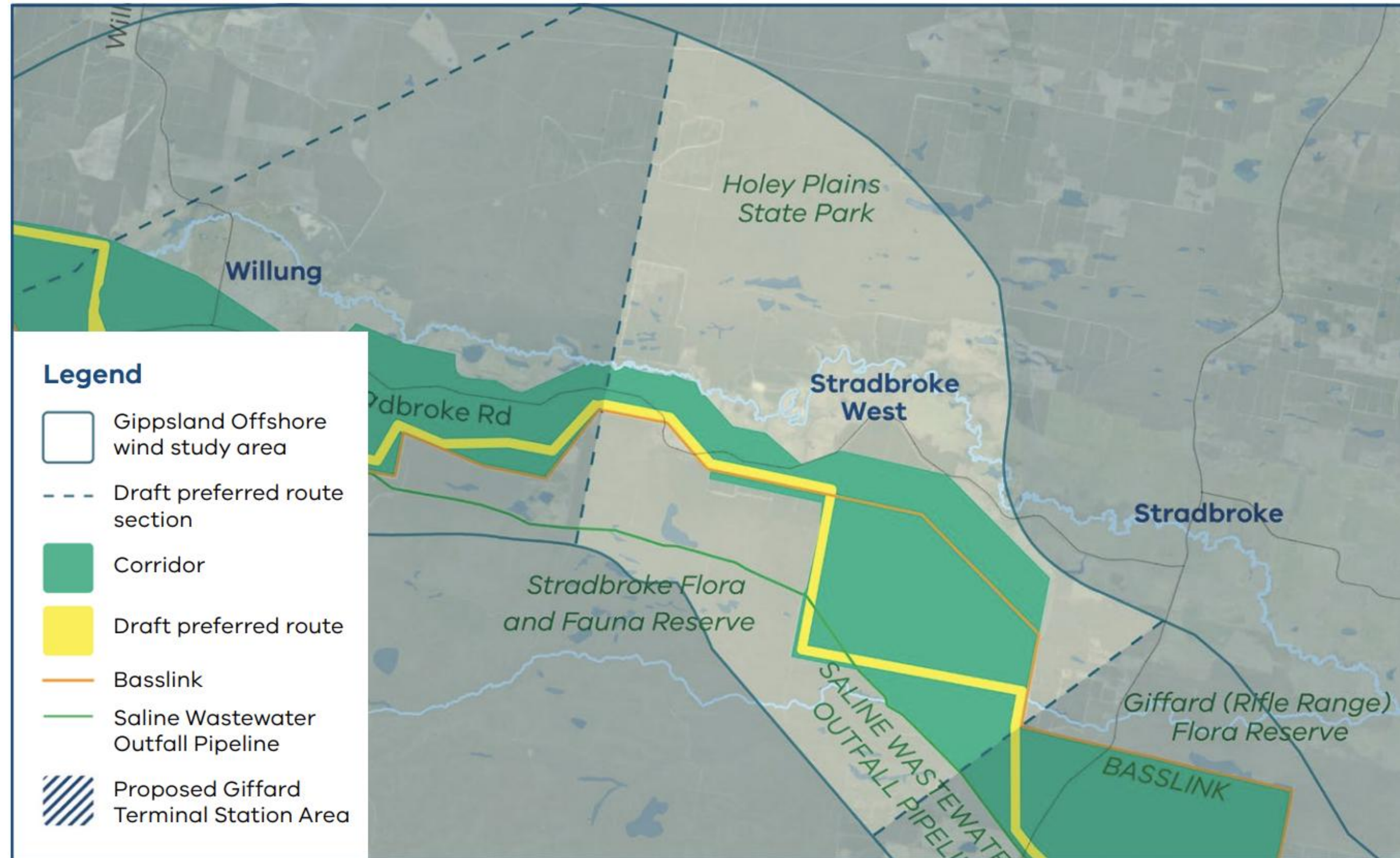
# Giffard terminal station to Stradbroke



## Key factors in this area

- Proximity to existing easements (SWOP)
- Homes on South Gippsland Hwy
- Giffard (Rifle Range) Flora and Fauna Reserve

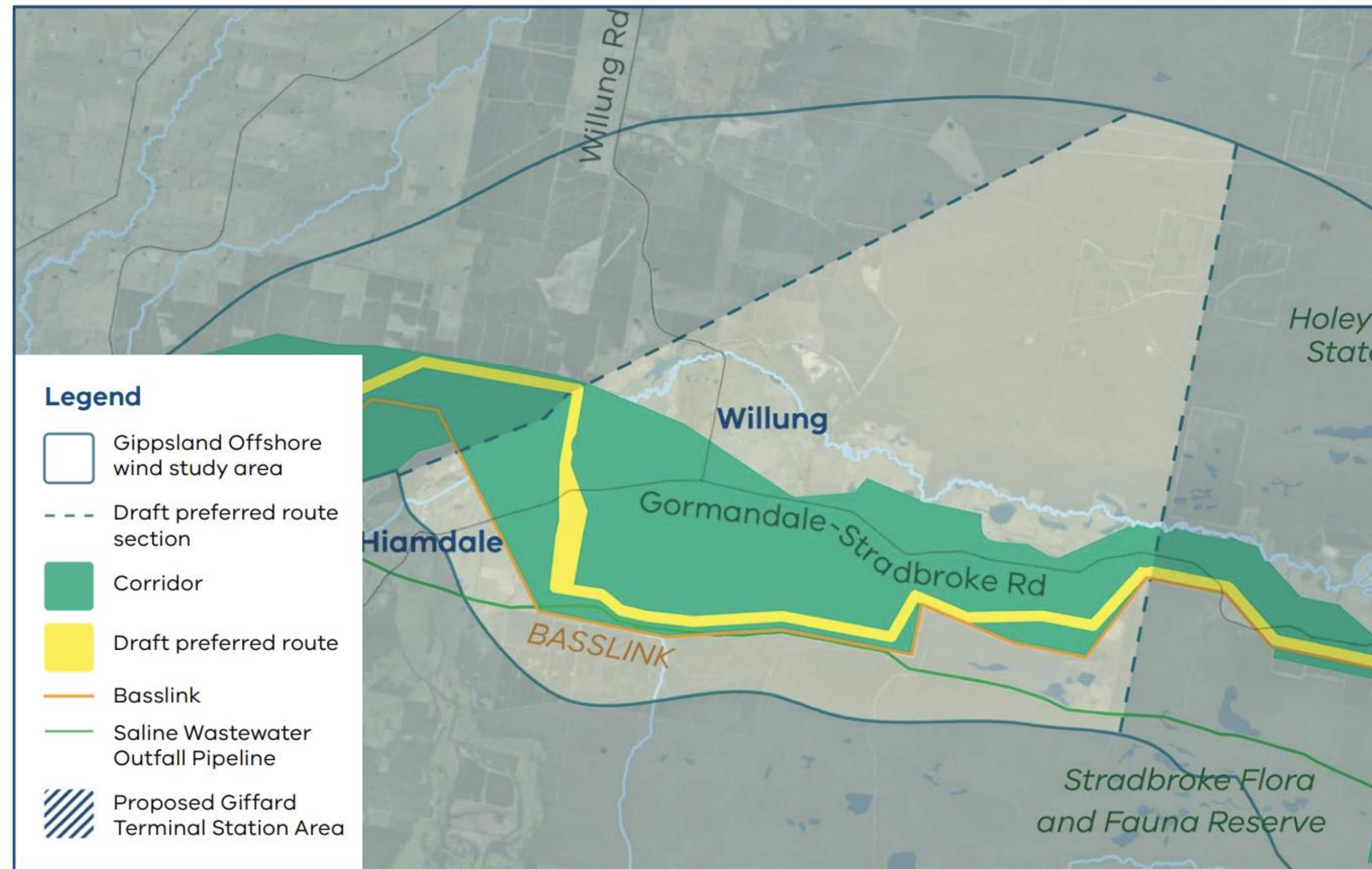
# Stradbroke to Willung



## Key factors in this area

- Proximity to existing easements (SWOP/Basslink)
- Location for Basslink crossing
- Homes north of Gormandale-Stradbroke Road
- Stradbroke Flora and Fauna Reserve

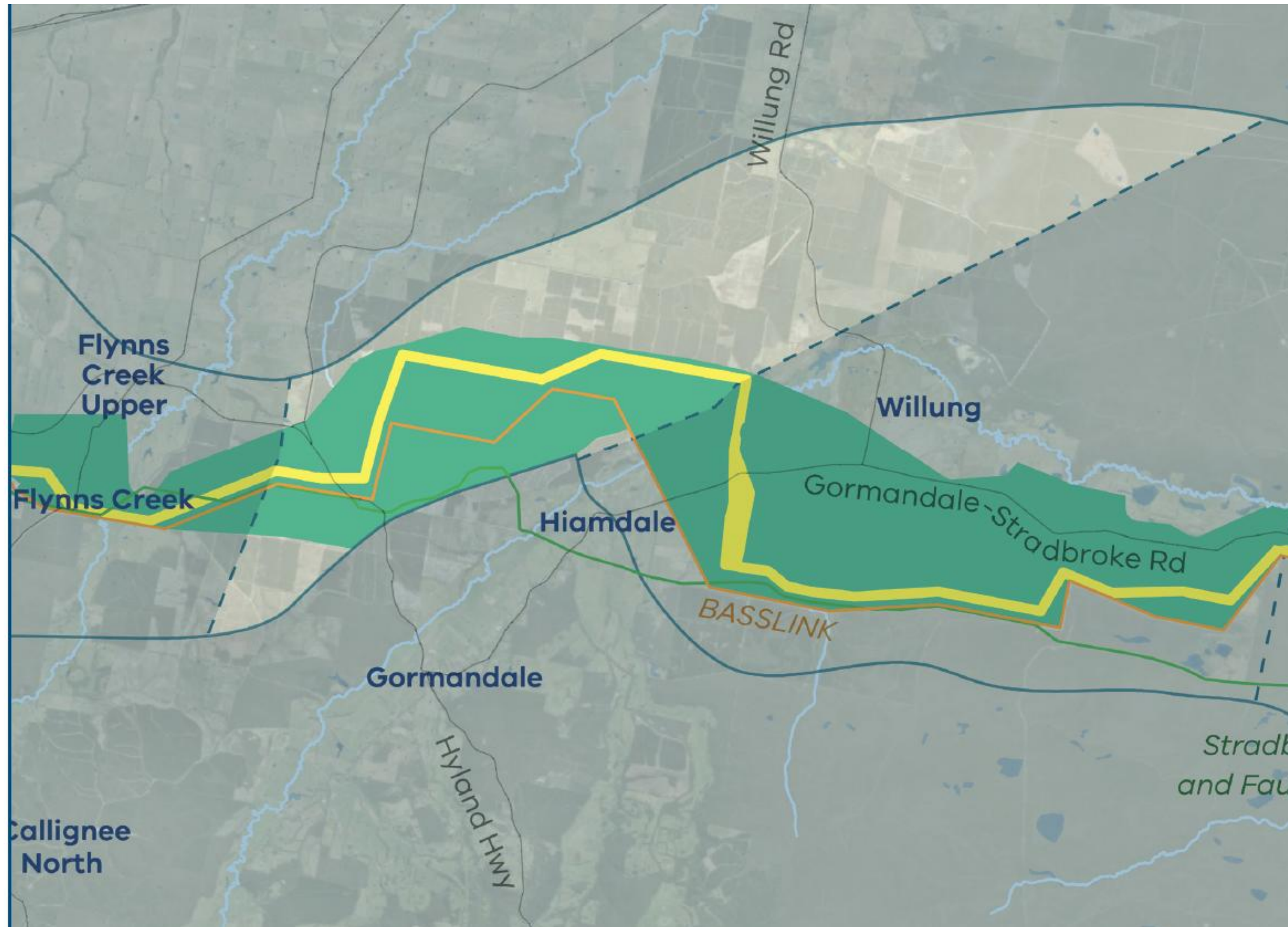
# Willung to Hiamdale



## Key factors in this area

- Homes along Gormandale-Stradbroke Road and near Willung
- Potential visual impacts, especially across the valley
- Landholders who already host transmission
- Proximity to existing easements (SWOP and Basslink)
- Where best to cross Merriman Creek

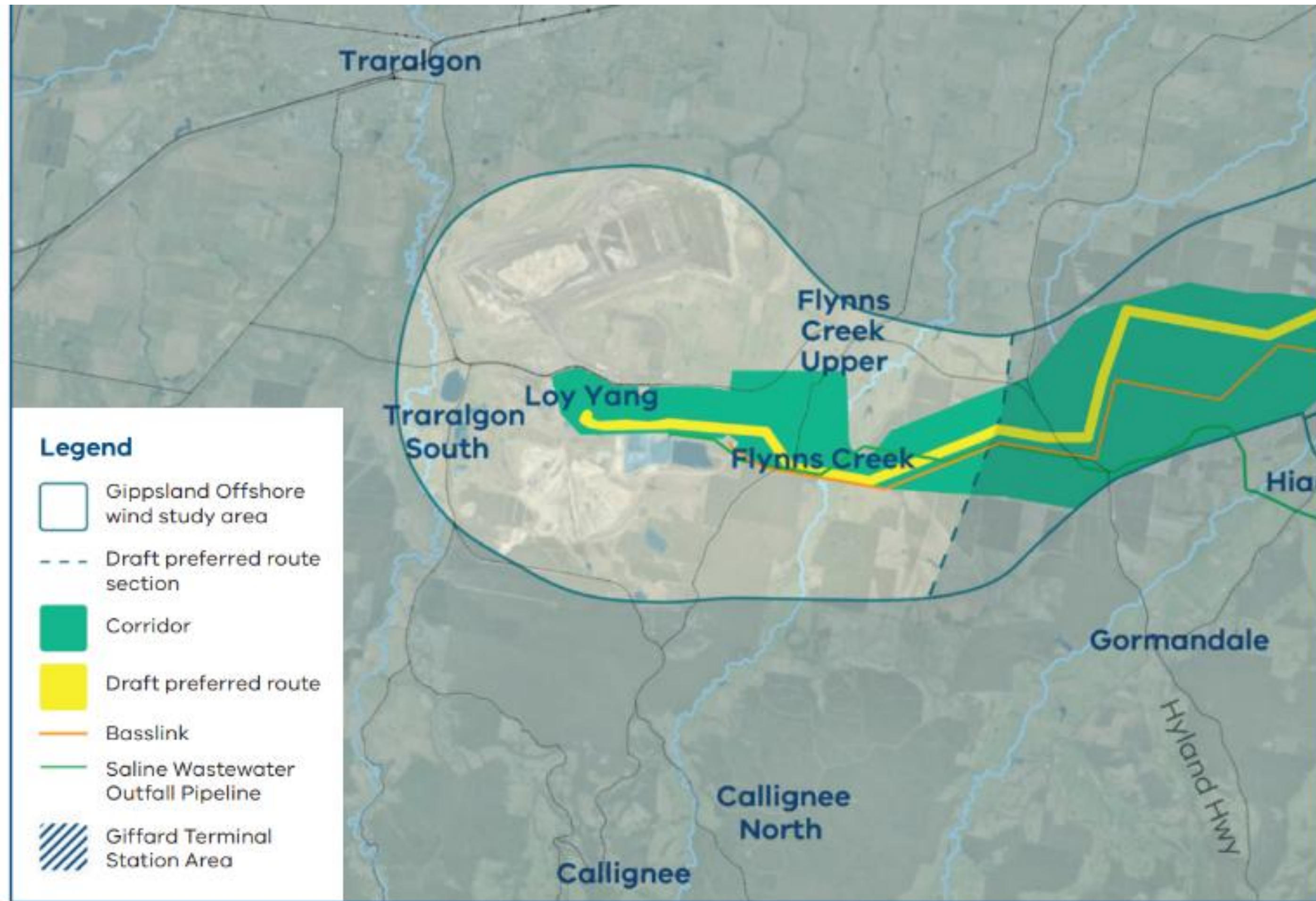
# Hiamdale to Flynnns Creek



## Key factors in this area

- Proximity to existing infrastructure and easements
- Plantation operations
- Homes along Hyland Highway
- possible impacts on views
- Gormandale Flora Reserve

# Flynns Creek to Loy Yang Power Station



## Key factors in this area

- Homes and other buildings on Scales Road
- Proximity to existing easements and infrastructure
- Connection at Loy Yang Power Station
- Proximity to Flynns Creek

# Next steps to confirm a preferred route

*Environmental assessments completed as part of the EES will help refine and confirm the preferred route and proposed locations for transmission towers and other infrastructure*

- Continue to speak with landholders to better understand their properties
- Undertake detailed EES studies
- Arrange land access for site investigations
- Surveys and site investigations

Questions?

# Thank you for your time.



[enquiries@vicgrid.com.au](mailto:enquiries@vicgrid.com.au)



[VicGrid](#)



[VicGrid](#)



[@deeca\\_vic](#)

# PROJECT UPDATE

Brief focus topic

# Project update

- Victoria State Government Auction deferral
- CAG schedule for 2026



## MEDIA STATEMENT Victorian offshore wind auction

16 September 2025

Southerly Ten acknowledges the Victorian Government's announcement that it has deferred a decision about starting Australia's first offshore wind auction until later this year. While this is disappointing, it does not change the reality that offshore wind is essential to Australia's energy future.

With 90 percent of coal-fired capacity forecast to retire by 2035, offshore wind energy is needed to ensure energy security, price stability and a pathway to net zero. Gippsland has powered Victoria for over a century – and it can continue to do so with offshore wind. With consistent winds, existing port and grid infrastructure to tap into, and a skilled energy workforce, Gippsland is uniquely positioned to deliver Australia's first offshore wind project.

A successful first project in Gippsland won't just deliver much-needed new capacity, cut emissions and create regional jobs – it will pave the way for a national offshore wind industry. Today at the APAC Wind Energy Summit in Melbourne, we heard Minister D'Ambrosio reaffirm Victoria's commitment to offshore wind as a cornerstone of the state's energy plan.

With seven years of development work behind us on Star of the South, we know Gippsland has some of the world's best offshore wind conditions – we are ready to deliver and harness this untapped resource for Australia. We will continue to engage constructively with government, industry partners and communities to unlock the full potential of offshore wind for Australia.

Power-to-X Grid Connection More News

offshoreWIND.biz

Fixed-Bottom Floating V

## Victorian Gov't Delays Launch of First Offshore Wind Auction

PLANNING & PERMITTING

September 16, 2025, by Adnan Memija

Share this article



The Victorian government has postponed its first offshore wind auction, which was originally set to launch in September, according to Energy Minister Lily D'Ambrosio.

Menu Search

Monday, November 10, 2025

RENEW ECONOMY  
CLEAN ENERGY NEWS AND ANALYSIS

Home Wind Solar Storage Electrification Commentary Podcasts Maps All

The Driven

Home » Renewables » Wind » Better late than never? There is a lot at stake in Victoria's delayed offshore wind auction

## Better late than never? There is a lot at stake in Victoria's delayed offshore wind auction

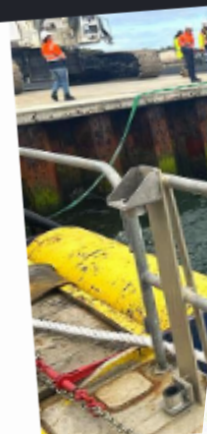


Image: Flotation Energy

Rachel Williamson Sep 19, 2025

Iberdrola Launches Campaign at 3 GW Offshore Wind Project in Australia about 1 month ago

Victoria Gov't Adopts Plan for Renewable Energy Zones 2 months ago



BREAK

# GIPPSLAND OFFSHORE WIND ALLIANCE

Brief focus topic

# Gippsland Offshore Wind Alliance (GOWA) Sector Plan

A plan for state and federal governments to work with industry and regional stakeholders to support delivery of a Gippsland offshore wind industry.

## Funding

GOWA members including developers and councils

## Project oversight



## Five focus areas:

1. Maximising economic and environmental benefits
2. Enabling infrastructure
3. Workforce education and upskilling
4. Supply chain and manufacturing capabilities
5. Engaging communities

# Priority Actions for Australian and Victorian Government

- The Australian and Victorian Governments, where appropriate, work with industry to deliver:
  - a **clear enabling mechanism** to support investment
  - **regular procurement rounds** to create a steady pipeline of projects
  - timely availability of port and transmission infrastructure. A consistent, efficient and coordinated **regulatory framework** for approvals.
  - **sufficient resourcing for government agencies** who will play a role in offshore wind activities during construction and operation stages
- Australian and Victorian Governments:
  - establish a consistent **Payment in Lieu of Rates** framework to enable Councils to deliver and maintain essential social and physical infrastructure to support the development of Gippsland's offshore wind industry
  - co-create a financial support package to assist with **employment transition for existing energy workers** and underrepresented cohorts potentially as part of the Commonwealth's *Energy Industry Jobs Plan*.
  - continue industry development initiatives such as the ***Future Made in Australia Innovation Fund*** and ***Made in Victoria 2030*** manufacturing and supply chain development funds to increase and uplift Australian capabilities in direct supply chains
  - build **incentives** into competitive procurement processes **to encourage local content** where feasible and appropriate, complemented by funding to support higher costs for industry establishment.

# Priority Actions for the Victorian Government

## The Victorian Government:

- with licence holders and councils, **make necessary zone planning changes** to enable appropriate development of Operations and Maintenance Hubs in Gippsland.
- provide funding and incentives to encourage industry, government and education sectors to partner and **establish equipment, infrastructure and curriculum requirements** to enable place-based delivery.
- lead targeted collaboration between industry, regional councils and Traditional Owner representative organisations to:
  - **identify and support existing regional businesses** who can play key role supplying the components and services needed to deliver offshore wind projects
  - establish an **investment attraction strategy** for large scale national and international renewable energy project suppliers and maintenance service providers **to establish operations in Gippsland.**
- embed economic development objectives for the offshore wind sector **into regional and local planning policy** to attract and facilitate investment.

Victorian TAFE network, regional secondary schools develop a **regional skills attraction and training strategy** to enable a coordinated transition in Gippsland.

# Priority Actions for VicGrid

- Ensure delivery of transmission infrastructure to enable connection of the **first 2GW of offshore wind to the grid**.
- Provide clarity on the **location, timing and capacity of connection points** for the remaining 7GW of offshore wind to provide confidence and certainty to industry.

# Next steps

Finalise and launch the Gippsland Offshore Wind Alliance (GOWA) Sector Plan



# What's happening on the project

- Latrobe Valley Sustainability Group
- Hosted Energy Infrastructure Commissioner at Yarram Southerly Ten office
- Presented to Monash University /Karlstad University (Sweden)
- Wellington Shire Council - Councillor Workshop
- 2025 East Gippsland Major Projects Forum
- Engagement Institute Conference
- Gippsland Offshore Wind Days:
  - Seaspray
  - Port Welshpool
- Latrobe City Council – Gippsland Offshore Wind Alliance
- Engagement Institute Annual Conference
- Southerly Ten CEO at COP30, the 30th UN Climate Change Conference, in Belém, Brazil, from November 10 to 21, 2025



# What's coming up

## Events and presentations

- Southerly Ten Pop-up - Port Albert
- TAFE Directors Australia, Clean Energy Network
- Yarram Agricultural Show
- Prom Produce & Craft Market - Foster
- SeaDays Festival - Port Welshpool
- Deadly in Gippsland, First Nations Business Expo – Sale



# What's happening in the community?

- What are you hearing?
- What are the hot topics in your local area?



# OTHER BUSINESS

# Other business

- The CAG annual member survey will be sent out in early December

Other questions and feedback?

Suggestions for future agenda items

- Email / call Jason or Paul

**Next meeting – 5:30pm to 7:30pm**  
**Wednesday, 10 Dec. 2025**  
The Rusty Gurnard, Port Welshpool

---

Date (subject to change)	Location	Topic (tentative, subject to change)
Feb (date TBC)	Yarram, (venue TBC)	(TBC)

Thank you for your participation



PROJECTS BY



[info@southerlyten.com.au](mailto:info@southerlyten.com.au)  
[southerlyten.com.au](http://southerlyten.com.au)

LinkedIn: [Southernly Ten](#)

Office: (03) 9108 4000  
Community: 1800 340 340