

NEWSLETTER MAY 2026



HELLO GIPPSLAND!

We're back with another update about Australia's most advanced offshore wind project.

Star of the South will harness Bass Strait's powerful 'roaring forties' winds to supply power for 1.2 million homes and continue energy jobs in Gippsland for decades to come.

Get the latest project information on **page 2**.



ENVIRONMENTAL ASSESSMENTS COMING SOON

Another opportunity to have your say on Star of the South is coming up in the next few weeks, when our environmental assessments will be released for public review and comment.

During the public review period, you'll be able to:

- Read information about the project, its potential effects on the environment and how these will be addressed
- Attend drop-in community sessions to talk with our team
- Provide feedback to government before they decide on project approvals.

Find out more on **page 5**.

What's inside

Project information and map	page 2
Why offshore wind makes sense	page 4
What's next for offshore wind?	page 4
Have your say on our environmental assessments	page 5
Protecting the environment	page 6



STAY INFORMED

Follow us on Facebook @ Star of the South Project or join our mailing list at southerlyten.com.au

PROJECT SNAPSHOT

Benefits for Gippsland

Star of the South will help create a new industry for Gippsland with opportunities for the future.

With an installed capacity of up to 2.2 GW, this project will:



ADD \$3 BILLION
TO THE REGIONAL
ECONOMY



CREATE 600
DIRECT GIPPSLAND
CONSTRUCTION
JOBS



PROVIDE 200
LONG-TERM
GIPPSLAND
JOBS DURING
OPERATIONS

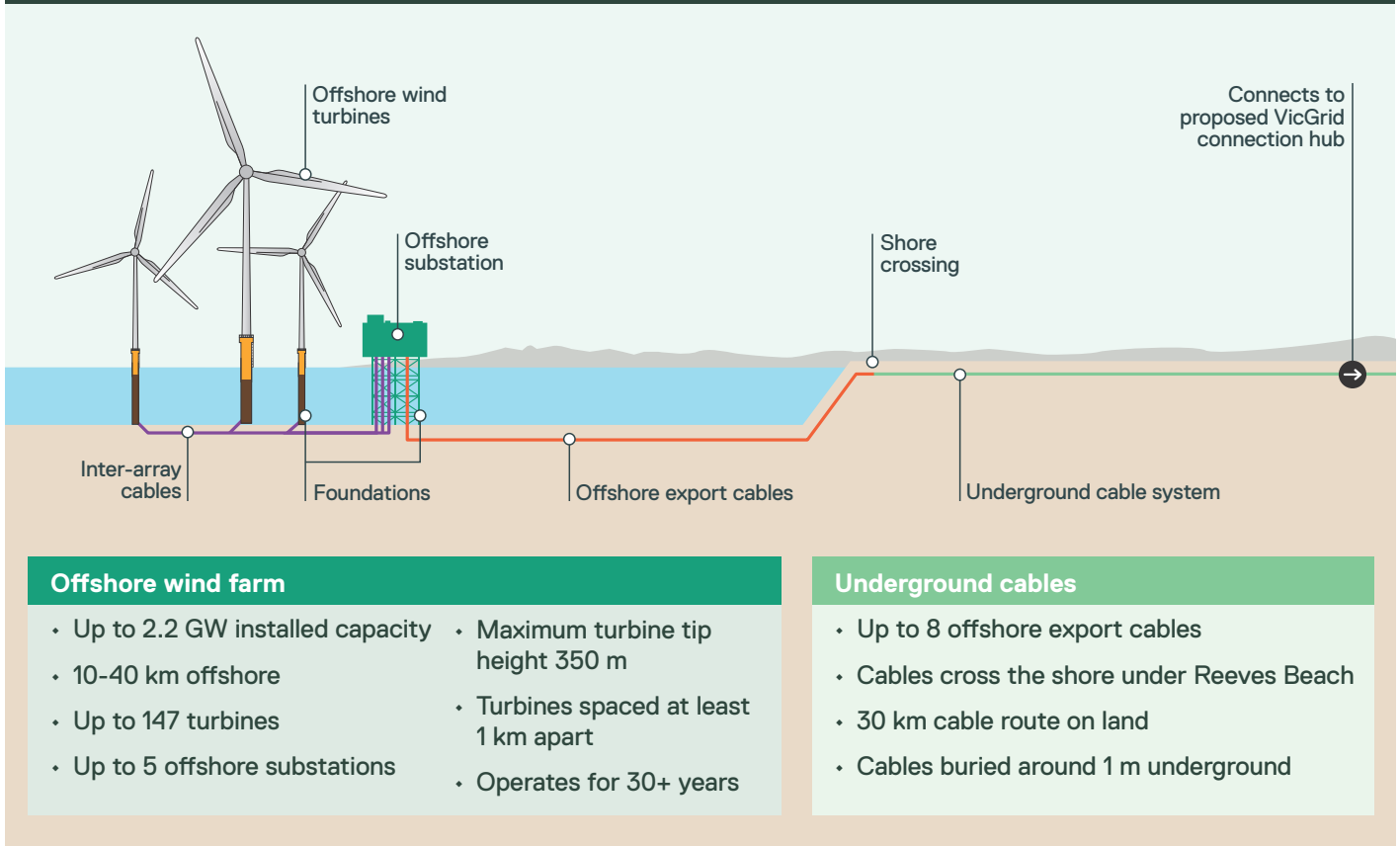


BOOST ENERGY
SUPPLY AND
SECURITY FOR
AUSTRALIANS



SAVE 7 MILLION
TONNES OF CO²
EMISSIONS PER
YEAR

What's involved?



Timing

We've completed all feasibility studies and are at an advanced stage of development. To move ahead to construction, we first need to:

- ✓ Obtain all necessary Australian and Victorian government approvals
- ✓ Be successful in the Victorian offshore wind auction
- ✓ Lock in the financing needed to fund construction.

FEASIBILITY & DEVELOPMENT

6-10 YEARS

WE'RE
HERE

CONSTRUCTION

4-6 YEARS

OPERATIONS & MAINTENANCE

30+ YEARS

DECOMMISSIONING

2-3 YEARS

*Indicative, based on typical offshore wind project time frames.

● Traralgon

● Loy Yang

● Gormandale

Proposed VicGrid connection hub

● Seaspray

Onshore transmission alignment options

● Giffard

Onshore transmission alignment

Giffard Rd

● Woodside

● Woodside Beach

Offshore export cable area

● Yarram

Woodside Beach Rd

Reeves Beach

● McLoughlins Beach

Saint Margaret Island

● Port Albert

Sunday Island

Snake Island

Offshore wind farm area 586km²

Seal Islands

Existing Basslink Interconnector



Did you know?
 Gippsland has the best offshore wind fundamentals in Australia. In fact, it's one of the best places in the world to harness the power of offshore wind!





WHY OFFSHORE WIND MAKES SENSE

Gippsland offshore wind can help lower power prices, reduce the need for new transmission and keep the grid stable.

We asked energy experts to compare a future with and without offshore wind, to understand what effect it'll have on our energy system as aging coal power stations retire.

Here's what they found.

With offshore wind (7 GW by 2040):

- Over 900 km less new transmission needed, saving over \$5 billion
- Less reliance on fuels like gas to keep the lights on, saving \$2.5 billion

- Lower power bills, saving \$150 a year for a typical Victorian home.

A major benefit of Gippsland offshore wind is when it will produce power. It is perfectly matched to the dinnertime energy use peak and can help fill gaps during winter and summer peaks.

Without it, we would need much more onshore wind, extra transmission to connect it to the grid, and be more reliant on gas and interstate power – which means higher, less stable prices.



Did you know?

There are over 14,000 turbines already operating in the ocean worldwide.

WHAT'S NEXT FOR OFFSHORE WIND IN GIPPSLAND

Later this year, the Victorian Government will start its first offshore wind auction.

This auction is like a tender process and helps decide which projects can supply the first 2 GW of offshore wind energy.

It's a critical step to move offshore wind from idea to delivery and to help secure the best deal for energy users and local communities.

We look forward to taking part.

How it works



STEP 1

The government sets the auction rules and invites projects to bid



STEP 2

Projects submit their proposal and a price for their electricity



STEP 3

The government picks the best value projects to sign a contract



STEP 4

The project developer covers all construction costs



STEP 5

Once operating, the projects supply electricity to homes and businesses at the agreed price for a set number of years

* Typical approach, details of the Victorian auction design are not confirmed.

HAVE YOUR SAY ON ENVIRONMENTAL ASSESSMENTS

After five years of research, consultation and technical studies, our Environmental Impact Statement (EIS) will soon be available for public review.

What's an EIS?

The EIS is a detailed report with information about:

- The project and why it's proposed
- How it will be constructed, operated and removed
- The environmental studies we've completed
- Potential impacts and how we plan to address them.

Why is it needed?

Star of the South needs approval under Australia's national environmental law – the *Environment Protection and Biodiversity Conservation Act 1999* (EPBC Act).

The EIS will help government and communities understand the project in detail before an approval decision is made.

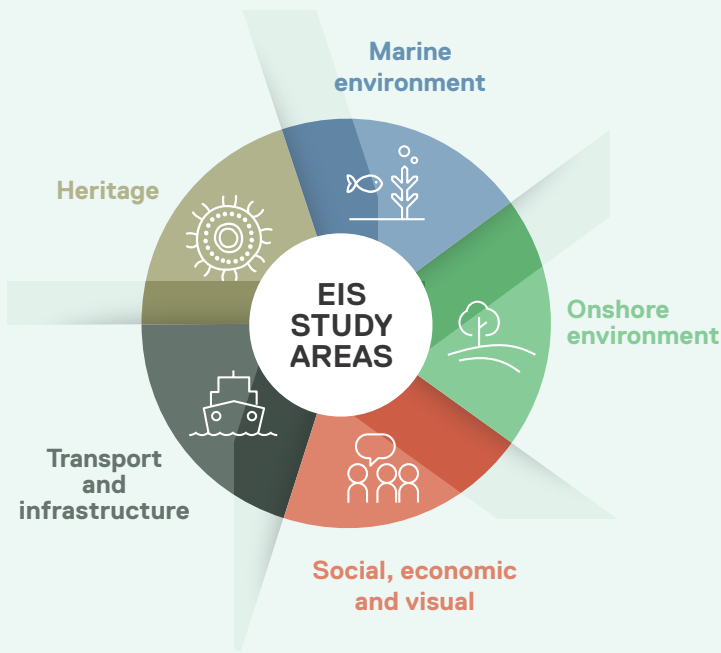


You can have a say

Public scrutiny is an important part of the assessment and approvals process. When the EIS is released in the coming weeks, anyone can make a written submission. You'll have 30 business days to provide feedback.

We want to make it easy for people to find information and get involved. During the public review period, we will:

- Share information about how to make a submission
- Make all documents available online
- Provide hard copies in public libraries
- Share easy-to-read summary information
- Hold information sessions across Gippsland and online
- Be available by phone, email and in person to answer questions.



Assessing works in Victoria

Part of the project's transmission system is in Victoria. This part is also being assessed through a Victorian Environment Effects Statement (EES). The EES focuses on matters such as ecology, water, soil, heritage, traffic and land use along the transmission route in Victoria.

The EES will be available for public review and comment at the same time as the EIS.

Scan the QR code to learn about the Commonwealth EIS and Victorian EES processes.



Key steps in the EIS process



PROTECTING THE ENVIRONMENT

Looking after the environment is at the heart of what we do and how we're going about planning for Star of the South.

In practice, this includes:

- Choosing a site that avoids sensitive environmental areas
- Using the best available science to guide decisions
- Listening to Traditional Custodians, communities and independent specialists
- Using proven technologies and practices
- Adapting our approach as new information and technologies become available.



Understanding the marine environment

Working with leading scientists and research agencies, we collected more than 50,000 observations on fish, marine mammals, seabirds, marine ecology and coastal processes. This data has been used to design and plan a project that is sensitive to the marine environment.



Design guided by science

Turbines for Star of the South were re-designed specifically to reduce the potential risks to seabirds. In response to findings from bird surveys and technical modelling, we increased the 'air gap' (the space between the water and the turbine blade) to further reduce the risk of birds colliding with turbines by up to 70% for key species like the Albatross.



Best available technology

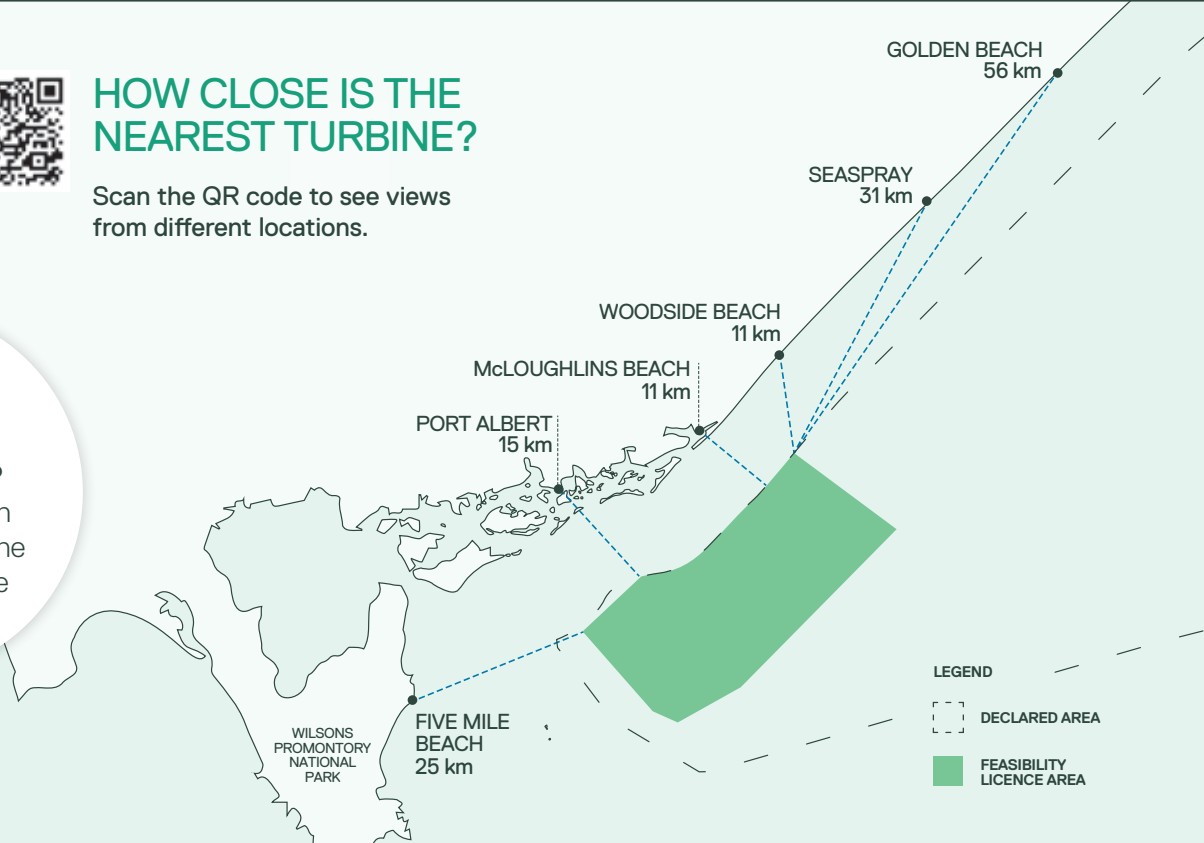
We'll adopt the latest technologies, such as 'bubble curtains', to protect whales from underwater construction noise. Bubble curtains dampen the volume and the distance sound travels. Scan the QR code to see how they work.



HOW CLOSE IS THE NEAREST TURBINE?

Scan the QR code to see views from different locations.

Did you know?
Just one spin of an offshore wind turbine can power a home for 48 hours.



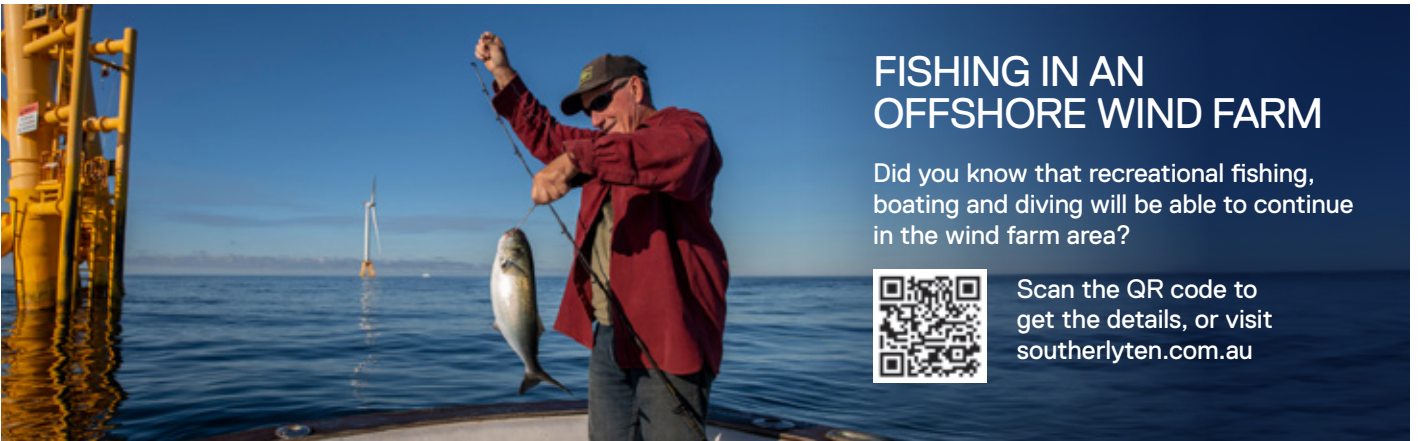


TRADITIONAL KNOWLEDGE TO SHAPE A BETTER PROJECT

We're proud to be involving Traditional Owners in planning Star of the South, through the Gunaikurnai Land and Waters Aboriginal Corporation (GLaWAC).

Over the years, GLaWAC has played an important role in the project's development – from supporting site studies to sharing knowledge and providing advice on a wide range of topics.

Last year we formalised the relationship with an Engagement Agreement, committing to working together to create a project that respects Country, reflects cultural knowledge and creates meaningful opportunities.



FISHING IN AN OFFSHORE WIND FARM

Did you know that recreational fishing, boating and diving will be able to continue in the wind farm area?



Scan the QR code to get the details, or visit southerlyten.com.au

MADE IN GIPPSLAND

There will be lots of ways Gippsland businesses can get involved in Star of the South.

We've identified more than 300 types of supply opportunities on the project. One of the biggest is steel fabrication of turbine foundation components.

Our specialist foundation designer from the UK visited workshops in the Latrobe Valley to identify which parts can be made locally.

He was impressed by the strong capability right here on our doorstep and identified up to 45,000 tonnes of steel components that could be made in Gippsland.

We're talking massive platforms, walkways, ladders, railings and steel tubes – which need to be fitted to the turbine foundations by skilled workers.

This would inject millions into local industry, creating skilled jobs and apprenticeships across the local supply chain.



Scan the QR code to see what we learned on our factory tour.



Did you know?

Built to its full potential, Star of the South's annual output will be similar to that of the Yallourn Power Station.



A

OUT AND ABOUT IN GIPPSLAND

We love talking offshore wind with Gippslanders. Here's a few happy snaps from our time out and about recently.



B



C



D



E

A Our Community Advisory Group visited Reeves Beach to learn about construction planned in this area

B Paul and local Calvin at a Gippsland Offshore Wind Day

C Jason showing a visitor our interactive kiosk

D Paul spoke with keen boaters at the first Gippsland Lakes Boat Show

E Paul took part in 'I'm a scientist' week at Yarram Primary School

F Paul joined South Gippsland Shire Council at a Future Ready Workshop

G We connected with students interested in an offshore wind career at jobs fairs



F



G

GET IN TOUCH



Call or email us anytime



Follow us on Facebook 'Star of the South Project'



Visit our Gippsland office, open Tuesdays, Wednesdays and by appointment.

A PROJECT BY



southerlyten.com.au
1800 340 340
info@southerlyten.com.au
310 Commercial Road, Yarram

LinkedIn Southernly Ten
Facebook Star of the South Project
Interpreter Call 13 14 50

We acknowledge the people of the Gunaikurnai nation as the original custodians of Country and pay our respect to Elders past and present.