

9.5.16 View location 16 - McLoughlins Beach public car park (Impact ID: SLVR01, SLVR07)

Location

View location 16 is at the McLoughlins Beach car park at the end of Foreshore Road. The view is oriented to the south towards the proposed offshore wind farm project infrastructure, with the closest turbines being approximately 11.105 kilometres from the view location.

Rationale for selection

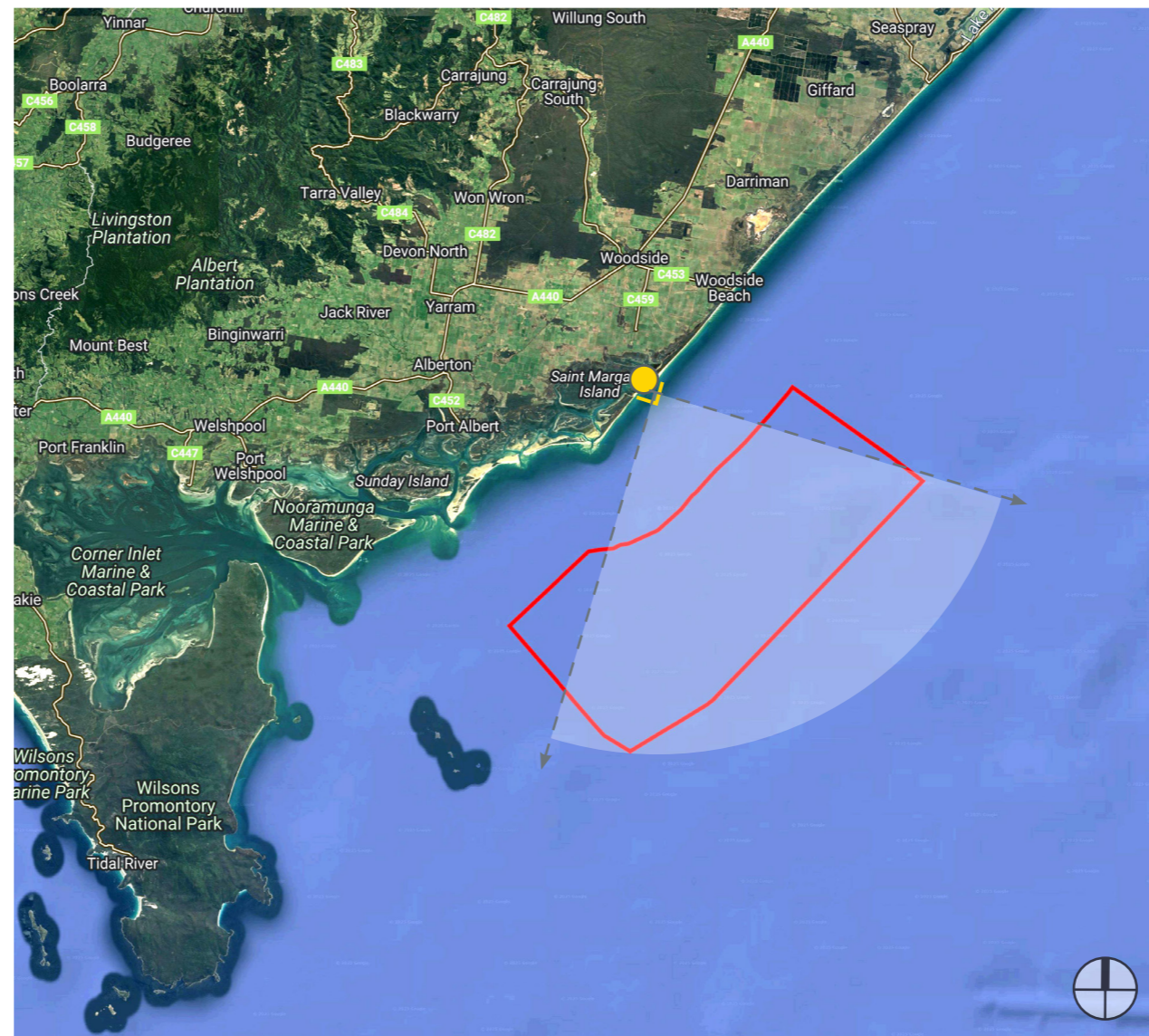
The view location is within the potential viewshed of the proposed project infrastructure (refer to mapping in Section 9.2) and is considered to be representative of views readily available within the public realm towards the proposed offshore wind farm and transmission infrastructure from McLoughlins Beach township.

View location 16 - Existing view

The existing view is in a coastal township context, with a jetty and associated signage, overhead lighting, a boat ramp, and an adjacent car park as visible structures. Vegetation on the coastal islands, which separate the sheltered estuarine waters in the foreground from the open waters of Bass Strait beyond, is visible and defines the backdrop to the view. The broad estuarine waters are a visually dominant feature; however, the open waters of Bass Strait beyond the coastal islands are not visible. A number of marine navigation structures are present.

View location 16 - Photomontage views

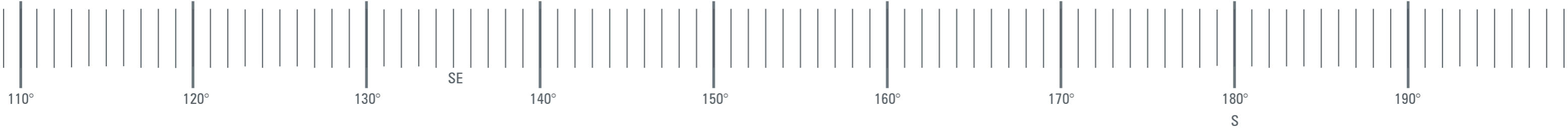
Photomontage views of the 271-metre and 350-metre turbine configurations show minimal change to the existing view, as offshore wind farm infrastructure, located approximately 11 kilometres from the viewing location, is partly visible above the prevailing vegetated skyline associated with the coastal islands. Where turbines are visible, the lower parts of the structures are screened by vegetation on the coastal islands, with only the upper parts of the towers and turbine blades visible. However, this screening effect is lessened for the 350-metre turbine configuration. The lack of visibility of the open waters of Bass Strait means that some viewers may not realise that the visible turbines are associated with an offshore wind farm.



 Camera location



Figure 132 View location 16: Existing view



**View Location 16 - the McLoughlins Beach Car Park at the end of Foreshore Road
- Facing south towards proposed turbines.**

Photomontage created by:
OZ - 3D Visualizer
Images created using:
3ds max 2024, Vray 6, autocad 2023, adobe photoshop, illustrator & indesign cc 2024
Method used to collect relevant data:
Photo locations surveyed on site by Geocomp Consulting pty ltd on 27/10/21
Camera:
Canon EOS 5Ds Digital SLR
Camera lens:
Canon EF 50mm f/1.8 USM

Photograph taken:
11:04am on 27/10/21
Photo taken at:
160cm above ground level
View location 16:
e: 491333.8385
n: 5726462.2255
rl: 3.316AHD

Project ref: 2019/0520
Dwg no.: VIA-076
Date: 03/02/26
Revision: P9

Hansen Partnership Pty Ltd
Melbourne | Byron Bay | Vietnam
Level 10, 150 Lonsdale Street
Melbourne vic 3000
T 61 3 9654 8844 **F** 61 3 9654 8088
E info@hansenpartnership.com.au
W hansenpartnership.com.au



Figure 133 View location 16: Wireframe view – 271-metre tip height parameter



**View Location 16 - the McLoughlins Beach Car Park at the end of Foreshore Road
- Facing south towards proposed turbines.**

Photomontage created by:
OZ - 3D Visualizer
Images created using:
3ds max 2024, Vray 6, autocad 2023, adobe photoshop, illustrator & indesign cc 2024
Method used to collect relevant data:
Photo locations surveyed on site by Geocomp Consulting pty ltd on 27/10/21
Camera:
Canon EOS 5Ds Digital SLR
Camera lens:
Canon EF 50mm f/1.8 USM

Photograph taken:
11:04am on 27/10/21
Photo taken at:
160cm above ground level
View location 16:
e: 491333.8385
n: 5726462.2255
rl: 3.316AHD
Approx distance to closest turbine
11130m

Project ref: 2019/0520
Dwg no.: VIA-077
Date: 03/02/26
Revision: P9

Hansen Partnership Pty Ltd
Melbourne | Byron Bay | Vietnam
Level 10, 150 Lonsdale Street
Melbourne vic 3000
T 61 3 9654 8844 **F** 61 3 9654 8088
E info@hansenpartnership.com.au
W hansenpartnership.com.au



Figure 134 View location 16: Photomontage view – 271-metre tip height parameter



**View Location 16 - the McLoughlins Beach Car Park at the end of Foreshore Road
- Facing south towards proposed turbines.**

Photomontage created by:
OZ - 3D Visualizer
Images created using:
3ds max 2024, Vray 6, autocad 2023, adobe photoshop, illustrator & indesign cc 2024
Method used to collect relevant data:
Photo locations surveyed on site by Geocomp Consulting pty ltd on 27/10/21
Camera:
Canon EOS 5Ds Digital SLR
Camera lens:
Canon EF 50mm f/1.8 USM

Photograph taken:
11:04am on 27/10/21
Photo taken at:
160cm above ground level
View location 16:
e: 491333.8385
n: 5726462.2255
rl: 3.316AHD
Approx distance to closest turbine
11130m

Project ref: 2019/0520
Dwg no.: VIA-078
Date: 03/02/26
Revision: P9

Hansen Partnership Pty Ltd
Melbourne | Byron Bay | Vietnam
Level 10, 150 Lonsdale Street
Melbourne vic 3000
T 61 3 9654 8844 **F** 61 3 9654 8088
E info@hansenpartnership.com.au
W hansenpartnership.com.au



Figure 135 View location 16: Wireframe view – 350-metre tip height parameter



**View Location 16 - the McLoughlins Beach Car Park at the end of Foreshore Road
- Facing south towards proposed turbines.**

Photomontage created by:
OZ - 3D Visualizer
Images created using:
3ds max 2024, Vray 6, autocad 2023, adobe photoshop, illustrator & indesign cc 2024
Method used to collect relevant data:
Photo locations surveyed on site by Geocomp Consulting pty ltd on 27/10/21
Camera:
Canon EOS 5Ds Digital SLR
Camera lens:
Canon EF 50mm f/1.8 USM

Photograph taken:
11:04am on 27/10/21
Photo taken at:
160cm above ground level
View location 16:
e: 491333.8385
n: 5726462.2255
rl: 3.316AHD
Approx distance to closest turbine
11180m

Project ref: 2019/0520
Dwg no.: VIA-079
Date: 03/02/26
Revision: P9

Hansen Partnership Pty Ltd
Melbourne | Byron Bay | Vietnam
Level 10, 150 Lonsdale Street
Melbourne vic 3000
T 61 3 9654 8844 **F** 61 3 9654 8088
E info@hansenpartnership.com.au
W hansenpartnership.com.au



Figure 136 View location 16: Photomontage view – 350-metre tip height parameter



**View Location 16 - the McLoughlins Beach Car Park at the end of Foreshore Road
- Facing south towards proposed turbines.**

Photomontage created by:
OZ - 3D Visualizer
Images created using:
3ds max 2024, Vray 6, autocad 2023, adobe photoshop, illustrator & indesign cc 2024
Method used to collect relevant data:
Photo locations surveyed on site by Geocomp Consulting pty ltd on 27/10/21
Camera:
Canon EOS 5Ds Digital SLR
Camera lens:
Canon EF 50mm f/1.8 USM

Photograph taken:
11:04am on 27/10/21
Photo taken at:
160cm above ground level
View location 16:
e: 491333.8385
n: 5726462.2255
rl: 3.316AHD
Approx distance to closest turbine
11180m

Project ref: 2019/0520
Dwg no.: VIA-080
Date: 03/02/26
Revision: P9

Hansen Partnership Pty Ltd
Melbourne | Byron Bay | Vietnam
Level 10, 150 Lonsdale Street
Melbourne vic 3000
T 61 3 9654 8844 **F** 61 3 9654 8088
E info@hansenpartnership.com.au
W hansenpartnership.com.au

View location 16 - Impact assessment

The assessments of the seascape, landscape, and visual impact of the proposed project infrastructure (271-metre and 350-metre tip height parameters) at view location 16 are summarised in Tables 42 and 43 below.

Table 42 271-metre tip height parameter impact assessment - view location 16

Assessment criteria	Assessment ranking	Rationale
Landscape value/Seascape value	High (regional significance)	The view location is within the 'Ninety Mile Coast' landscape character area, for which the assessed landscape/ seascape value is 'high (regional significance)'
Magnitude of visibility	Very low	Photomontage imagery prepared to represent the visual impact at this view location (refer to Figure 134) illustrates that the magnitude of visibility of the proposed project infrastructure is 'very low'.
Nature of receptors	Moderate	The view location is in the McLoughlins Beach Car Park with a jetty and boardwalk across the wetlands supports recreational activity at the foreshore. Receptors would typically be visitors visiting recognised landscapes or attractions.
Number of receptors	Low	The viewpoint is situated in a renowned scenic destination. However, it serves as a boat dropping jetty, meaning only individuals using the jetty will be present. Consequently, the assumption is that the number of observers at this location will be low.
Frequency	Very low	Individual receptors are assumed to visit this view location infrequently due to its access and location.
Duration	Very low	The duration of stay at this view location is assumed to be very low.
Receptor sensitivity	Low	Receptor sensitivity is assessed as 'low'.
Overall impact assessment	Low	

Table 43 350-metre tip height parameter impact assessment - view location 16

Assessment criteria	Assessment ranking	Rationale
Landscape value/Seascape value	High (regional significance)	The view location is within the 'Ninety Mile Coast' landscape character area, for which the assessed landscape/ seascape value is 'high (regional significance)'
Magnitude of visibility	Low	Photomontage imagery prepared to represent the visual impact at this view location (refer to Figure 136) illustrates that the magnitude of visibility of the proposed project infrastructure is 'low'.
Nature of receptors	Moderate	The view location is in the McLoughlins Beach Car Park with a jetty and boardwalk across the wetlands supports recreational activity at the foreshore. Receptors would typically be visitors visiting recognised landscapes or attractions.
Number of receptors	Low	The viewpoint is situated in a renowned scenic destination. However, it serves as a boat dropping jetty, meaning only individuals using the jetty will be present. Consequently, the assumption is that the number of observers at this location will be low.
Frequency	Very low	Individual receptors are assumed to visit this view location infrequently due to its access and location.
Duration	Very low	The duration of stay at this view location is assumed to be very low.
Receptor sensitivity	Low	Receptor sensitivity is assessed as 'low'.
Overall impact assessment	Moderate	

Anticipated impact

The final impact assessments for view location 16, determined based on landscape/ seascape value, magnitude of visibility of the proposed project infrastructure, and receptor sensitivity, are assessed as 'low' for the 271-metre tip height parameter and 'moderate' for the 350-metre tip height parameter.

9.5.17 View location 17 - McLoughlins Beach (Impact ID: SLVR01, SLVR07)

Location

View location 17 is at McLoughlins Beach. The view is oriented to the south towards the proposed offshore wind farm project infrastructure, with the closest turbines being approximately 10.3 kilometres from the view location.

Rationale for selection

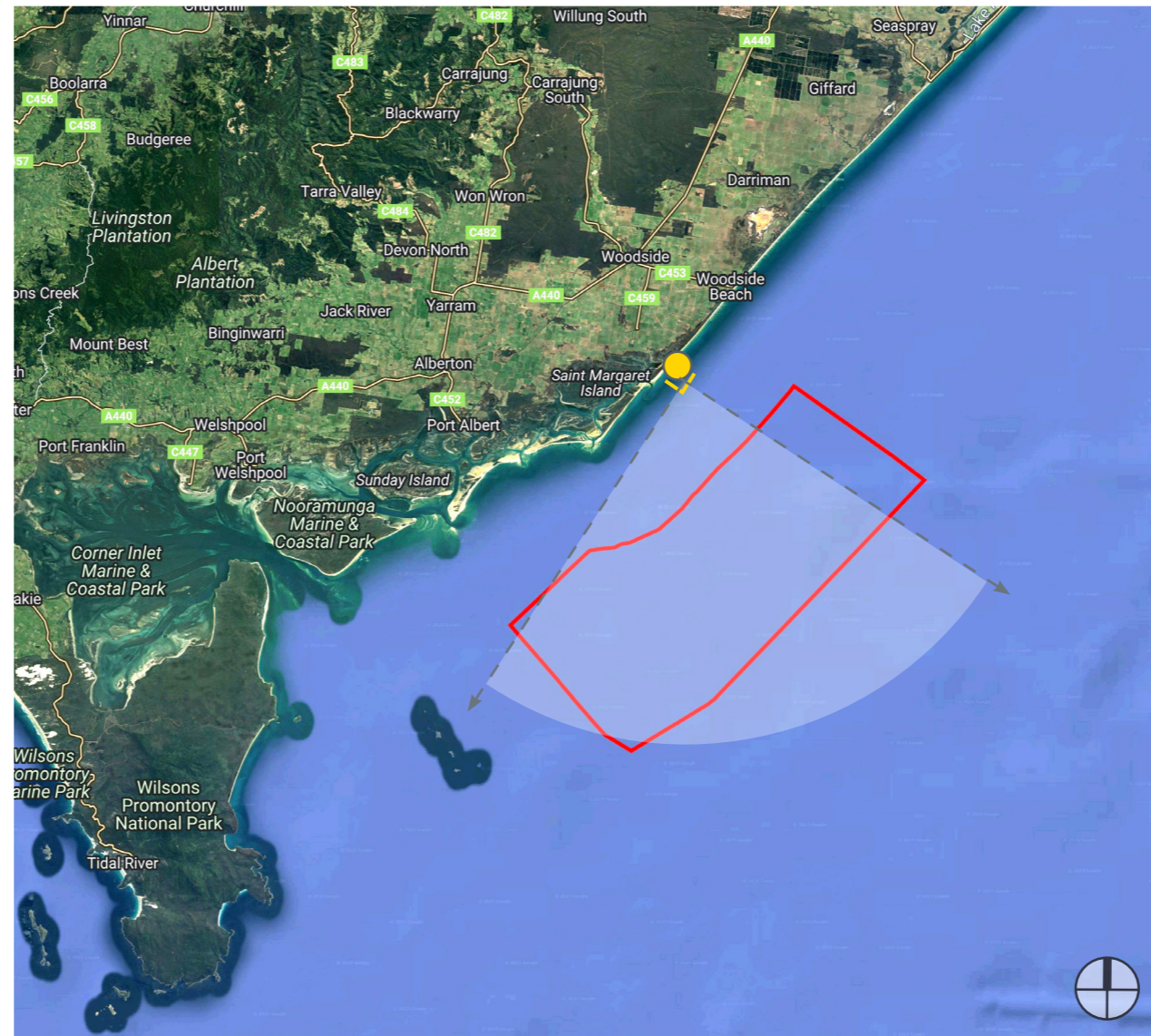
The view location is within the potential viewshed of the proposed project infrastructure (refer to mapping in Section 9.2) and is considered to be representative of views readily available within the public realm towards the proposed offshore wind farm and transmission infrastructure from McLoughlins Beach township.

View location 17 - Existing view

The existing view is in a beach side context, comprising an open vista of Bass Strait with foreground coastal vegetation present on the sand dunes from which the view is seen. No existing buildings or other structures are visible.

View location 17 - Photomontage views

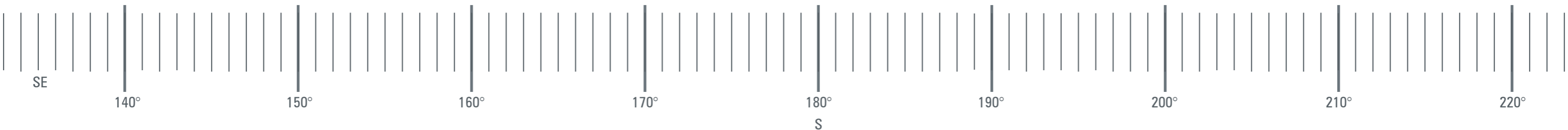
Photomontage views of 271-metre and 350-metre turbine configurations exhibit a very high level of change to the existing view, as offshore wind farm infrastructure (which is located approximately 10.3 kilometres from the viewing location) is visible on the horizon across the entirety of the view. It will be clear to the viewer that the wind farm is located in the sea.



 Camera location



Figure 137 View location 17: Existing view



**View Location 17 - McLoughlins Beach
- Facing south towards proposed turbines.**

Photomontage created by:
OZ - 3D Visualizer

Images created using:
3ds max 2024, Vray 6, autocad 2023, adobe photoshop, illustrator & indesign cc 2024

Method used to collect relevant data:
Photo locations surveyed on site by Geocomp Consulting pty ltd on 27/10/21

Camera:
Canon EOS 5Ds Digital SLR

Camera lens:
Canon EF 50mm f/1.8 USM

Photograph taken:
11:44am on 27/10/21

Photo taken at:
160cm above ground level

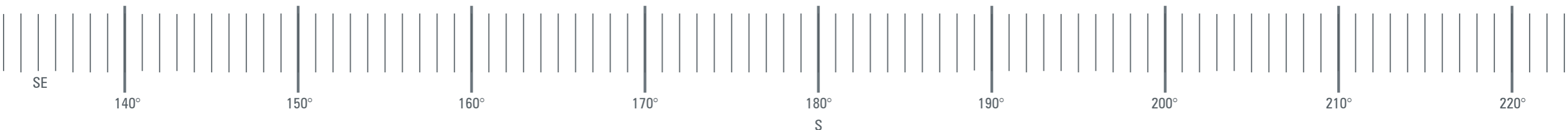
View location 17:
e: 491949.1849
n: 5725955.2246
rl: 7.778AHD

Project ref: 2019/0520
Dwg no.: VIA-081
Date: 03/02/26
Revision: P9

Hansen Partnership Pty Ltd
Melbourne | Byron Bay | Vietnam
Level 10, 150 Lonsdale Street
Melbourne vic 3000
T 61 3 9654 8844 **F** 61 3 9654 8088
E info@hansenpartnership.com.au
W hansenpartnership.com.au



Figure 138 View location 17: Wireframe view – 271-metre tip height parameter



**View Location 17 - McLoughlins Beach
- Facing south towards proposed turbines.**

Photomontage created by:
OZ - 3D Visualizer
Images created using:
3ds max 2024, Vray 6, autocad 2023, adobe photoshop, illustrator & indesign cc 2024
Method used to collect relevant data:
Photo locations surveyed on site by Geocomp Consulting pty ltd on 27/10/21
Camera:
Canon EOS 5Ds Digital SLR
Camera lens:
Canon EF 50mm f/1.8 USM

Photograph taken:
11:44am on 27/10/21
Photo taken at:
160cm above ground level
View location 17:
e: 491949.1849
n: 5725955.2246
rl: 7.778AHD

Approx distance to closest turbine
10335m

Project ref: 2019/0520
Dwg no.: VIA-082
Date: 03/02/26
Revision: P9

Hansen Partnership Pty Ltd
Melbourne | Byron Bay | Vietnam
Level 10,150 Lonsdale Street
Melbourne vic 3000
T 61 3 9654 8844 **F** 61 3 9654 8088
E info@hansenpartnership.com.au
W hansenpartnership.com.au



Figure 139 View location 17: Photomontage view – 271-metre tip height parameter



**View Location 17 - McLoughlins Beach
- Facing south towards proposed turbines.**

Photomontage created by:
OZ - 3D Visualizer
Images created using:
3ds max 2024, Vray 6, autocad 2023, adobe photoshop, illustrator & indesign cc 2024
Method used to collect relevant data:
Photo locations surveyed on site by Geocomp Consulting pty ltd on 27/10/21
Camera:
Canon EOS 5Ds Digital SLR
Camera lens:
Canon EF 50mm f/1.8 USM

Photograph taken:
11:44am on 27/10/21
Photo taken at:
160cm above ground level
View location 17:
e: 491949.1849
n: 5725955.2246
rl: 7.778AHD

Approx distance to closest turbine
10335m

Project ref: 2019/0520
Dwg no.: VIA-083
Date: 03/02/26
Revision: P9

Hansen Partnership Pty Ltd
Melbourne | Byron Bay | Vietnam
Level 10,150 Lonsdale Street
Melbourne vic 3000
T 61 3 9654 8844 **F** 61 3 9654 8088
E info@hansenpartnership.com.au
W hansenpartnership.com.au



Figure 140 View location 17: Wireframe view – 350-metre tip height parameter



**View Location 17 - McLoughlins Beach
- Facing south towards proposed turbines.**

Photomontage created by:
OZ - 3D Visualizer
Images created using:
3ds max 2024, Vray 6, autocad 2023, adobe photoshop, illustrator & indesign cc 2024
Method used to collect relevant data:
Photo locations surveyed on site by Geocomp Consulting pty ltd on 27/10/21
Camera:
Canon EOS 5Ds Digital SLR
Camera lens:
Canon EF 50mm f/1.8 USM

Photograph taken:
11:44am on 27/10/21
Photo taken at:
160cm above ground level
View location 17:
e: 491949.1849
n: 5725955.2246
rl: 7.778AHD

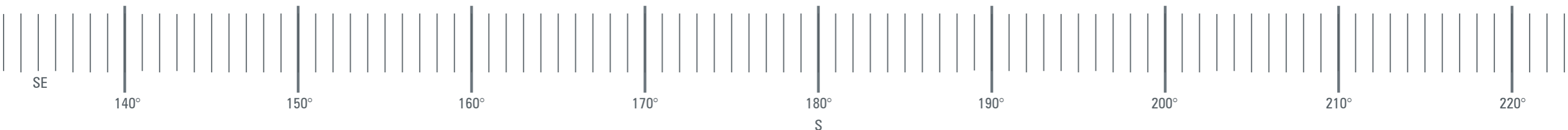
Approx distance to closest turbine
10384m

Project ref: 2019/0520
Dwg no.: VIA-084
Date: 03/02/26
Revision: P9

Hansen Partnership Pty Ltd
Melbourne | Byron Bay | Vietnam
Level 10,150 Lonsdale Street
Melbourne vic 3000
T 61 3 9654 8844 **F** 61 3 9654 8088
E info@hansenpartnership.com.au
W hansenpartnership.com.au



Figure 141 View location 17: Photomontage view – 350-metre tip height parameter



**View Location 17 - McLoughlins Beach
- Facing south towards proposed turbines.**

Photomontage created by:
OZ - 3D Visualizer

Images created using:
3ds max 2024, Vray 6, autocad 2023, adobe photoshop, illustrator & indesign cc 2024

Method used to collect relevant data:
Photo locations surveyed on site by Geocomp Consulting pty ltd on 27/10/21

Camera:
Canon EOS 5Ds Digital SLR

Camera lens:
Canon EF 50mm f/1.8 USM

Photograph taken:
11:44am on 27/10/21

Photo taken at:
160cm above ground level

View location 17:
e: 491949.1849
n: 5725955.2246
rl: 7.778AHD

Approx distance to closest turbine
10384m

Project ref: 2019/0520
Dwg no.: VIA-085
Date: 03/02/26
Revision: P9

Hansen Partnership Pty Ltd
Melbourne | Byron Bay | Vietnam
Level 10,150 Lonsdale Street
Melbourne vic 3000
T 61 3 9654 8844 **F** 61 3 9654 8088
E info@hansenpartnership.com.au
W hansenpartnership.com.au

View location 17 - Impact assessment

The assessments of the seascape, landscape, and visual impact of the proposed project infrastructure (271-metre and 350-metre tip height parameters) at view location 17 are summarised in Tables 44 and 45 below.

Table 44 271-metre tip height parameter impact assessment - view location 17

Assessment criteria	Assessment ranking	Rationale
Landscape value/Seascape value	High (regional significance)	The view location is within the 'Ninety Mile Coast' landscape character area, for which the assessed landscape/seascape value is 'high (regional significance)'
Magnitude of visibility	Very high	Photomontage imagery prepared to represent the visual impact at this view location (refer to Figure 139) illustrates that the magnitude of visibility of the proposed project infrastructure is 'high'.
Nature of receptors	Moderate	The view location is in the McLoughlins Beach. McLoughlins Beach foreshore is set within the tidal waters and mangrove wetland of Nooramunga Marine and Wildlife park. Receptors would typically be visitors visiting recognised landscapes or attractions.
Number of receptors	Low	The viewing spot is situated in a well-known scenic destination. However, reaching this location is not straightforward; it requires crossing a bridge and navigating a sand dune. Consequently, it is assumed that the number of receptors at this location will be low.
Frequency	Low	Individual receptors are assumed to visit this view location infrequently due to its access and location.
Duration	Moderate	The duration of stay at this view location is assumed to be moderate.
Receptor sensitivity	Moderate	Receptor sensitivity is assessed as 'moderate', because the view location is within a recognised scenic destination.
Overall impact assessment	High	

Table 45 350-metre tip height parameter impact assessment - view location 17

Assessment criteria	Assessment ranking	Rationale
Landscape value/Seascape value	High (regional significance)	The view location is within the 'Ninety Mile Coast' landscape character area, for which the assessed landscape/seascape value is 'high (regional significance)'
Magnitude of visibility	Very high	Photomontage imagery prepared to represent the visual impact at this view location (refer to Figure 141) illustrates that the magnitude of visibility of the proposed project infrastructure is 'high'.
Nature of receptors	Moderate	The view location is in the McLoughlins Beach. McLoughlins Beach foreshore is set within the tidal waters and mangrove wetland of Nooramunga Marine and Wildlife park. Receptors would typically be visitors visiting recognised landscapes or attractions.
Number of receptors	Low	The viewing spot is situated in a well-known scenic destination. However, reaching this location is not straightforward; it requires crossing a bridge and navigating a sand dune. Consequently, it is assumed that the number of receptors at this location will be low.
Frequency	Low	Individual receptors are assumed to visit this view location infrequently due to its access and location.
Duration	Moderate	The duration of stay at this view location is assumed to be moderate.
Receptor sensitivity	Moderate	Receptor sensitivity is assessed as 'moderate', because the view location is within a recognised scenic destination.
Overall impact assessment	High	

Anticipated impact

The final impact assessments for view location 17 - determined based on landscape/seascape value, the magnitude of visibility of the proposed project infrastructure, and receptor sensitivity for both the 271-metre and 350-metre tip height parameters are assessed as 'high'.

9.5.18 View location 18 - 13 Trood St, Seaspray (Impact ID: SLVR02)

Location

View location 18 is adjacent to private property at 13 Trood St, Seaspray. The view is oriented south towards the proposed offshore wind farm project infrastructure, with the closest turbines approximately 32.1 kilometres from the viewing location.

Rationale for selection

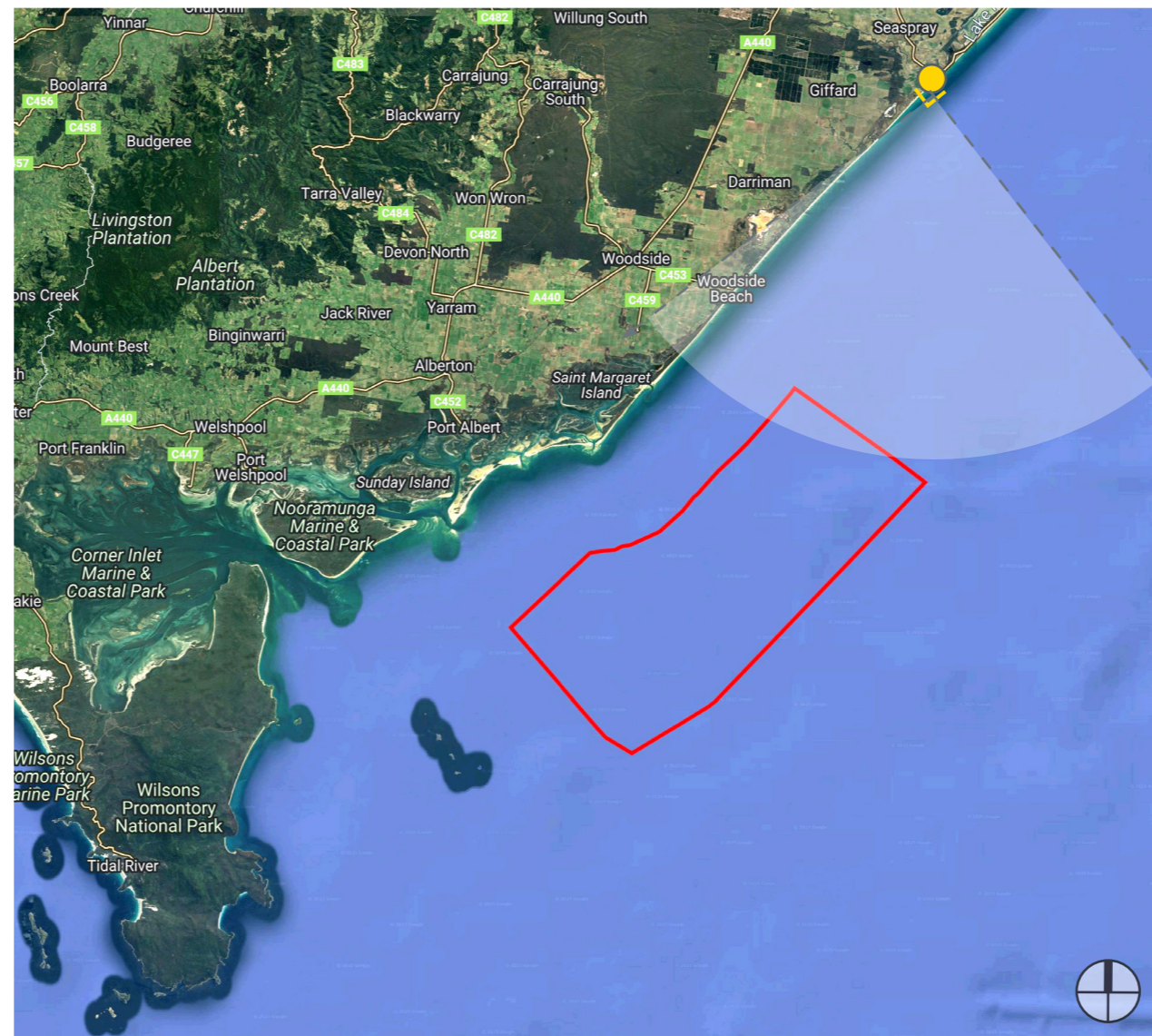
The view location is within the potential viewshed of the proposed project infrastructure (refer to mapping in Section 9.2) and is considered to be representative of views from proximate private residences towards the proposed offshore wind farm and transmission infrastructure from Seaspray township.

View location 18 - Existing view

The existing view is in a coastal township context, with parkland structures, bollards and signage associated with walking paths and local access roads being visible structures. A variety of vegetation types are present, including canopy trees associated with the township character, foreground coastal parkland vegetation comprising areas of mown grass and distant vegetation on the coastal dunes which form the coastline adjacent to the open waters of Bass Strait beyond, which are only partly visible.

View location 18 - Photomontage views

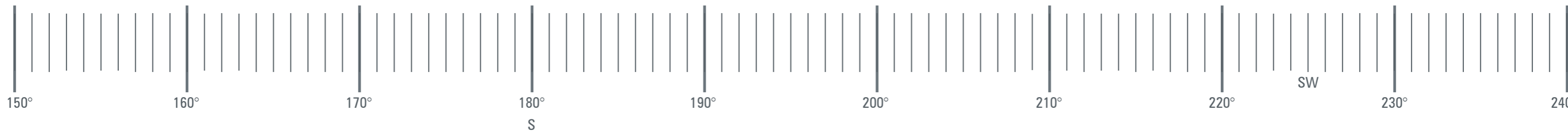
Photomontage views of the 271-metre and 350-metre turbine configurations show minimal change to the existing view, as the offshore wind farm infrastructure, located approximately 32 kilometres from the viewing location, is only visible through a relatively narrow break in the coastal vegetation, where views of the open waters of Bass Strait are available.



 Camera location



Figure 142 View location 18: Existing view



**View Location 18 - 13 Trood St, Seaspray
- Facing south towards proposed turbines.**

Photomontage created by:
OZ - 3D Visualizer

Images created using:
3ds max 2024, Vray 6, autocad 2023, adobe photoshop, illustrator & indesign cc 2024

Method used to collect relevant data:
Photo locations surveyed on site by Geocomp Consulting pty ltd on 27/10/21

Camera:
Canon EOS 5Ds Digital SLR

Camera lens:
Canon EF 50mm f/1.8 USM

Photograph taken:
14:40pm on 27/10/21

Photo taken at:
160cm above ground level

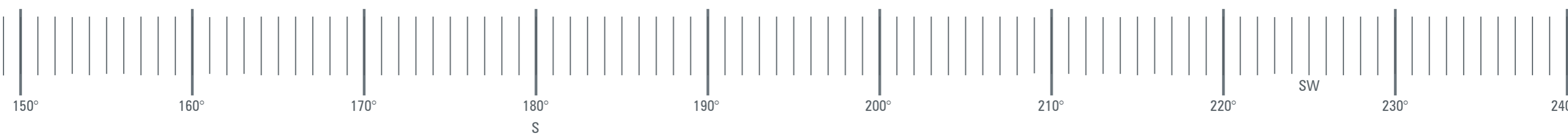
View location 18:
e: 516142.7377
n: 5751981.4372
rl: 4.643AHD

Project ref: 2019/0520
Dwg no.: VIA-086
Date: 03/02/26
Revision: pg

Hansen Partnership Pty Ltd
Melbourne | Byron Bay | Vietnam
Level 10, 150 Lonsdale Street
Melbourne vic 3000
T 61 3 9654 8844 **F** 61 3 9654 8088
E info@hansenpartnership.com.au
W hansenpartnership.com.au



Figure 143 View location 18: Wireframe view – 271-metre tip height parameter



**View Location 18 - 13 Trood St, Seaspray
- Facing south towards proposed turbines.**

Photomontage created by:
OZ - 3D Visualizer

Images created using:
3ds max 2024, Vray 6, autocad 2023, adobe photoshop, illustrator & indesign cc 2024

Method used to collect relevant data:
Photo locations surveyed on site by Geocomp Consulting pty ltd on 27/10/21

Camera:
Canon EOS 5Ds Digital SLR

Camera lens:
Canon EF 50mm f/1.8 USM

Photograph taken:
14:40pm on 27/10/21

Photo taken at:
160cm above ground level

View location 18:
e: 516142.7377
n: 5751981.4372
rl: 4.643AHD

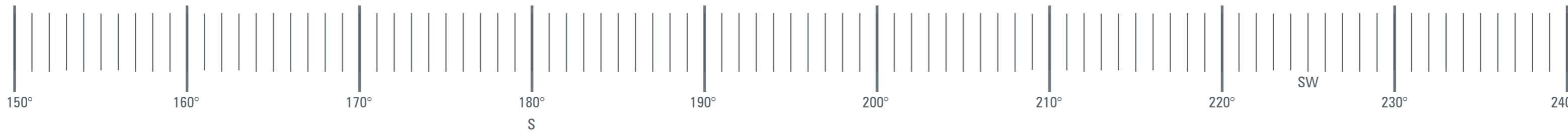
Approx distance to closest turbine
12892m

Project ref: 2019/0520
Dwg no.: VIA-087
Date: 03/02/26
Revision: pg

Hansen Partnership Pty Ltd
Melbourne | Byron Bay | Vietnam
Level 10, 150 Lonsdale Street
Melbourne vic 3000
T 61 3 9654 8844 **F** 61 3 9654 8088
E info@hansenpartnership.com.au
W hansenpartnership.com.au



Figure 144 View location 18: Photomontage view – 271-metre tip height parameter



**View Location 18 - 13 Trood St, Seaspray
- Facing south towards proposed turbines.**

Photomontage created by:
OZ - 3D Visualizer

Images created using:
3ds max 2024, Vray 6, autocad 2023, adobe photoshop, illustrator & indesign cc 2024

Method used to collect relevant data:
Photo locations surveyed on site by Geocomp Consulting pty ltd on 27/10/21

Camera:
Canon EOS 5Ds Digital SLR

Camera lens:
Canon EF 50mm f/1.8 USM

Photograph taken:
14:40pm on 27/10/21

Photo taken at:
160cm above ground level

View location 18:
e: 516142.7377
n: 5751981.4372
rl: 4.643AHD

Approx distance to closest turbine
12892m

Project ref: 2019/0520
Dwg no.: VIA-088
Date: 03/02/26
Revision: pg

Hansen Partnership Pty Ltd
Melbourne | Byron Bay | Vietnam
Level 10, 150 Lonsdale Street
Melbourne vic 3000
T 61 3 9654 8844 **F** 61 3 9654 8088
E info@hansenpartnership.com.au
W hansenpartnership.com.au



Figure 145 View location 18: Wireframe view – 350-metre tip height parameter



**View Location 18 - 13 Trood St, Seaspray
- Facing south towards proposed turbines.**

Photomontage created by:
OZ - 3D Visualizer

Images created using:
3ds max 2024, Vray 6, autocad 2023, adobe photoshop, illustrator & indesign cc 2024

Method used to collect relevant data:
Photo locations surveyed on site by Geocomp Consulting pty ltd on 27/10/21

Camera:
Canon EOS 5Ds Digital SLR

Camera lens:
Canon EF 50mm f/1.8 USM

Photograph taken:
14:40pm on 27/10/21

Photo taken at:
160cm above ground level

View location 18:
e: 516142.7377
n: 5751981.4372
rl: 4.643AHD

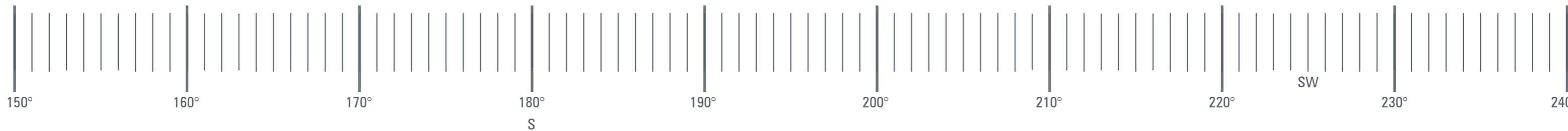
Approx distance to closest turbine
10998m

Project ref: 2019/0520
Dwg no.: VIA-089
Date: 03/02/26
Revision: pg

Hansen Partnership Pty Ltd
Melbourne | Byron Bay | Vietnam
Level 10,150 Lonsdale Street
Melbourne vic 3000
T 61 3 9654 8844 **F** 61 3 9654 8088
E info@hansenpartnership.com.au
W hansenpartnership.com.au



Figure 146 View location 18: Photomontage view – 350-metre tip height parameter



**View Location 18 - 13 Trood St, Seaspray
- Facing south towards proposed turbines.**

Photomontage created by:
OZ - 3D Visualizer

Images created using:
3ds max 2024, Vray 6, autocad 2023, adobe photoshop, illustrator & indesign cc 2024

Method used to collect relevant data:
Photo locations surveyed on site by Geocomp Consulting pty ltd on 27/10/21

Camera:
Canon EOS 5Ds Digital SLR

Camera lens:
Canon EF 50mm f/1.8 USM

Photograph taken:
14:40pm on 27/10/21

Photo taken at:
160cm above ground level

View location 18:
e: 516142.7377
n: 5751981.4372
rl: 4.643AHD

Approx distance to closest turbine
10998m

Project ref: 2019/0520
Dwg no.: VIA-090
Date: 03/02/26
Revision: pg

Hansen Partnership Pty Ltd
Melbourne | Byron Bay | Vietnam
Level 10, 150 Lonsdale Street
Melbourne vic 3000
T 61 3 9654 8844 **F** 61 3 9654 8088
E info@hansenpartnership.com.au
W hansenpartnership.com.au

View location 18 - Impact assessment

The assessments of the seascape, landscape, and visual impact of the proposed project infrastructure (271-metre and 350-metre tip height parameters) at view location 46 are summarised in Tables 46 and 47 below.

Table 46 271-metre tip height parameter impact assessment - view location 18

Assessment criteria	Assessment ranking	Rationale
Landscape value/Seascape value	High (state significance)	The view location is within the 'Ninety Mile Coast' landscape character area, for which the assessed landscape/seascape value is 'high (state significance)'
Magnitude of visibility	Very low	Photomontage imagery prepared to represent the visual impact at this view location (refer to Figure 144) illustrates that the magnitude of visibility of the proposed project infrastructure is 'very low'.
Nature of receptors	Very high	The view location is adjacent to private property at 2 Trood Street, Seaspray, and is considered to be representative of views from proximate private residences.
Number of receptors	Very low	Trood Street is a local street used primarily for access to adjacent property. Therefore, the number of receptors is assumed to be very low.
Frequency	Very high	Private residents are assumed to have a very high frequency of visitation.
Duration	Very high	Private residents are assumed to have a very high duration of visitation.
Receptor sensitivity	High	Receptor sensitivity at this view location is assessed as 'high'.
Overall impact assessment	Moderate	

Table 47 350-metre tip height parameter impact assessment - view location 18

Assessment criteria	Assessment ranking	Rationale
Landscape value/Seascape value	High (state significance)	The view location is within the 'Ninety Mile Coast' landscape character area, for which the assessed landscape/seascape value is 'high (state significance)'
Magnitude of visibility	Very low	Photomontage imagery prepared to represent the visual impact at this view location (refer to Figure 146) illustrates that the magnitude of visibility of the proposed project infrastructure is 'very low'.
Nature of receptors	Very high	The view location is adjacent to private property at 2 Trood Street, Seaspray, and is considered to be representative of views from proximate private residences.
Number of receptors	Very low	Trood Street is a local street used primarily for access to adjacent property. Therefore, the number of receptors is assumed to be very low.
Frequency	Very high	Private residents are assumed to have a very high frequency of visitation.
Duration	Very high	Private residents are assumed to have a very high duration of visitation.
Receptor sensitivity	High	Receptor sensitivity at this view location is assessed as 'high'.
Overall impact assessment	Moderate	

Anticipated impact

The final impact assessments for view location 18 - determined based on landscape/seascape value, the magnitude of visibility of the proposed project infrastructure, and receptor sensitivity for both the 271-metre and 350-metre tip height parameters are assessed as 'moderate'.

9.5.19 View location 19 - Seaspray Surf Life Saving Club Lookout (Impact ID: SLVR01)

Location

View location 19 is at the lookout near Seaspray Surf Life Saving Club. The view is oriented to the south towards the proposed offshore wind farm project infrastructure, with the closest turbines being approximately 32.3 kilometres from the view location.

Rationale for selection

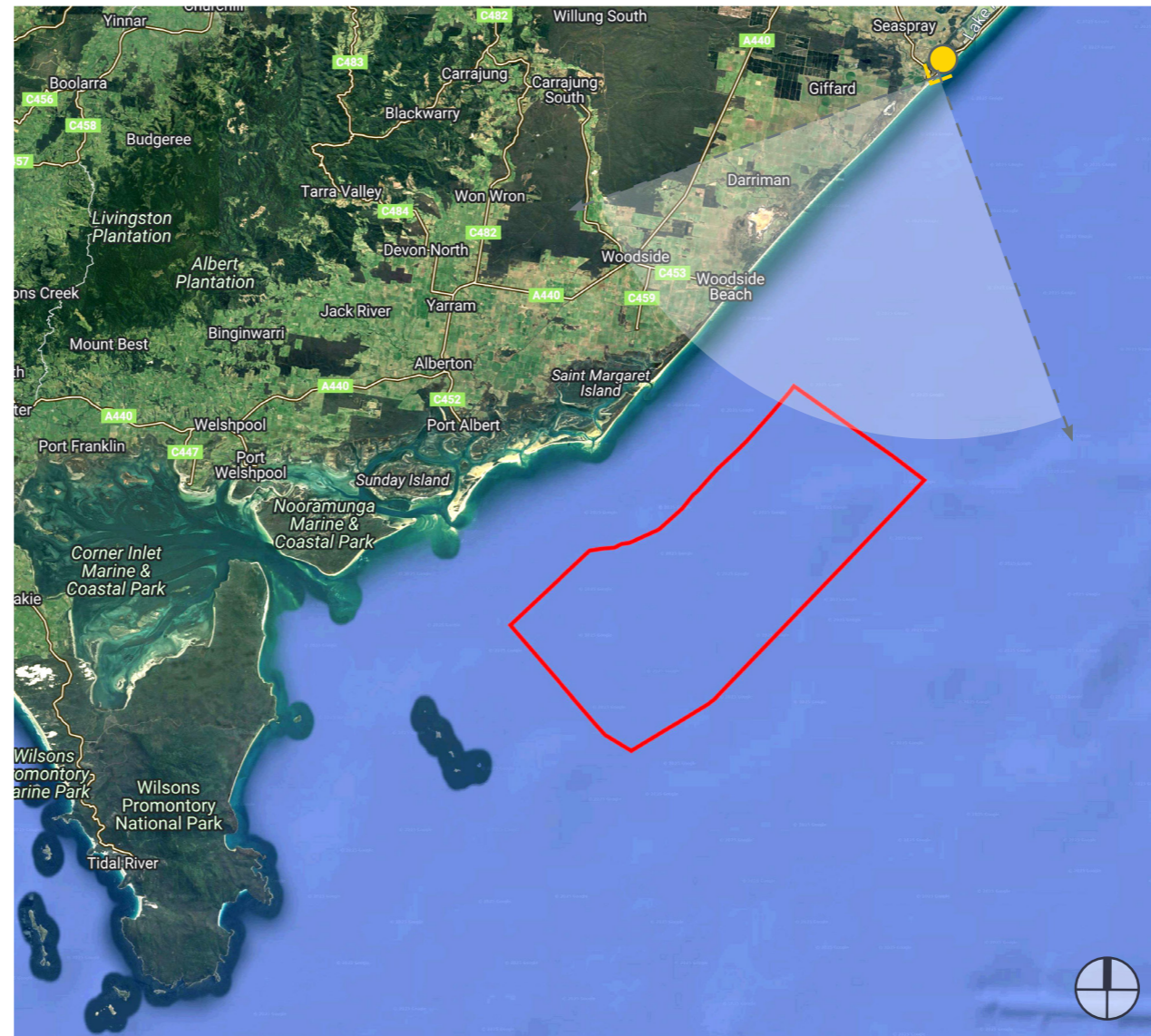
This view location falls within the potential viewshed of the proposed project infrastructure (refer to mapping in Section 9.2) and is considered representative of views readily available within the public realm towards the proposed offshore wind farm and transmission infrastructure from Seaspray township.

View location 19 - Existing view

The existing view is in a beachside township context, comprising an open vista of Bass Strait with foreground buildings and other structures visible. Coastal vegetation is present on the sand dunes from which the view is seen, but it is less visually prominent than the visible structures.

View location 19 - Photomontage views

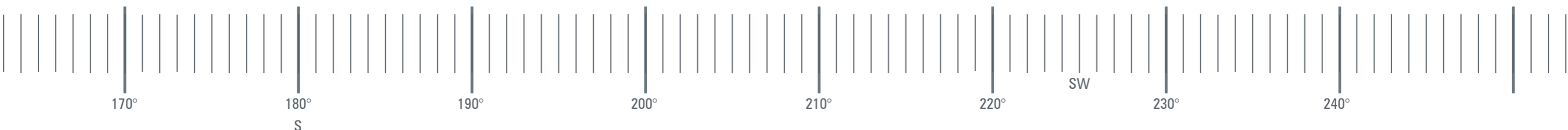
Photomontage views of the 271-metre and 350-metre turbine configurations show a low to moderate level of change to the existing view, as the offshore wind farm infrastructure, located approximately 32 kilometres from the viewing location, is visible on the horizon. It is important to note that the view orientation is towards the offshore wind farm, whereas a view directly out to sea from this location (i.e., perpendicular to the coastline) would be less affected, as it would be oriented in a more south-easterly direction where turbines will not be present. It will be clear to viewers that the wind farm is located at sea.



 Camera location



Figure 147 View location 19: Existing view



**View Location 19 - the lookout near Seaspray Surf Life Saving Club
- Facing south towards proposed turbines.**

Photomontage created by:
OZ - 3D Visualizer
Images created using:
3ds max 2024, Vray 6, autocad 2023, adobe photoshop, illustrator & indesign cc 2024
Method used to collect relevant data:
Photo locations surveyed on site by Geocomp Consulting pty ltd on 27/10/21
Camera:
Canon EOS 5Ds Digital SLR
Camera lens:
Canon EF 50mm f/1.8 USM

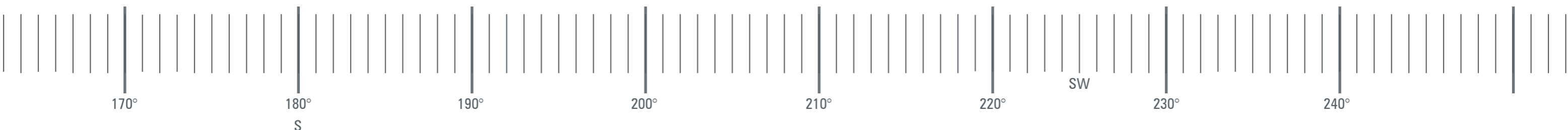
Photograph taken:
14:56pm on 27/10/21
Photo taken at:
160cm above ground level
View location 19:
e: 516388.5562
n: 5752060.5130
rl: 8.335AHD

Project ref: 2019/0520
Dwg no.: VIA-091
Date: 03/02/26
Revision: P9

Hansen Partnership Pty Ltd
Melbourne | Byron Bay | Vietnam
Level 10, 150 Lonsdale Street
Melbourne vic 3000
T 61 3 9654 8844 **F** 61 3 9654 8088
E info@hansenpartnership.com.au
W hansenpartnership.com.au



Figure 148 View location 19: Wireframe view – 271-metre tip height parameter



**View Location 19 - the lookout near Seaspray Surf Life Saving Club
- Facing south towards proposed turbines.**

Photomontage created by:
OZ - 3D Visualizer
Images created using:
3ds max 2024, Vray 6, autocad 2023, adobe photoshop, illustrator & indesign cc 2024
Method used to collect relevant data:
Photo locations surveyed on site by Geocomp Consulting pty ltd on 27/10/21
Camera:
Canon EOS 5Ds Digital SLR
Camera lens:
Canon EF 50mm f/1.8 USM

Photograph taken:
14:56pm on 27/10/21
Photo taken at:
160cm above ground level

View location 19:
e: 516388.5562
n: 5752060.5130
rl: 8.335AHD

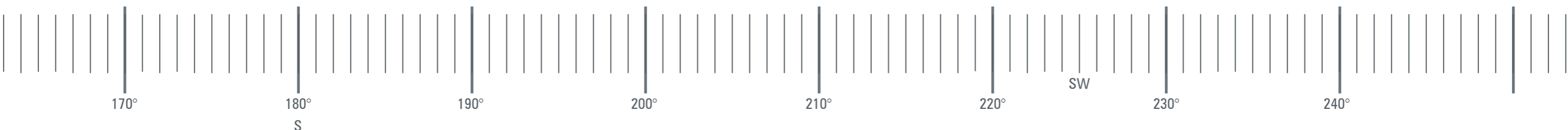
Approx distance to closest turbine
31302m

Project ref: 2019/0520
Dwg no.: VIA-092
Date: 03/02/26
Revision: p9

Hansen Partnership Pty Ltd
Melbourne | Byron Bay | Vietnam
Level 10, 150 Lonsdale Street
Melbourne vic 3000
T 61 3 9654 8844 **F** 61 3 9654 8088
E info@hansenpartnership.com.au
W hansenpartnership.com.au



Figure 149 View location 19: Photomontage view – 271-metre tip height parameter



**View Location 19 - the lookout near Seaspray Surf Life Saving Club
- Facing south towards proposed turbines.**

Photomontage created by:
OZ - 3D Visualizer
Images created using:
3ds max 2024, Vray 6, autocad 2023, adobe photoshop, illustrator & indesign cc 2024
Method used to collect relevant data:
Photo locations surveyed on site by Geocomp Consulting pty ltd on 27/10/21
Camera:
Canon EOS 5Ds Digital SLR
Camera lens:
Canon EF 50mm f/1.8 USM

Photograph taken:
14:56pm on 27/10/21
Photo taken at:
160cm above ground level

View location 19:
e: 516388.5562
n: 5752060.5130
rl: 8.335AHD

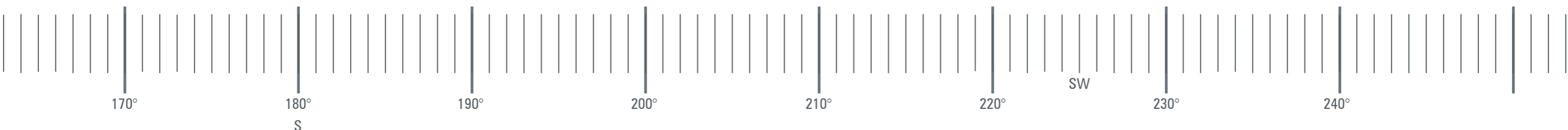
Approx distance to closest turbine
31302m

Project ref: 2019/0520
Dwg no.: VIA-093
Date: 03/02/26
Revision: P9

Hansen Partnership Pty Ltd
Melbourne | Byron Bay | Vietnam
Level 10, 150 Lonsdale Street
Melbourne vic 3000
T 61 3 9654 8844 **F** 61 3 9654 8088
E info@hansenpartnership.com.au
W hansenpartnership.com.au



Figure 150 View location 19: Wireframe view – 350-metre tip height parameter



**View Location 19 - the lookout near Seaspray Surf Life Saving Club
- Facing south towards proposed turbines.**

Photomontage created by:
OZ - 3D Visualizer
Images created using:
3ds max 2024, Vray 6, autocad 2023, adobe photoshop, illustrator & indesign cc 2024
Method used to collect relevant data:
Photo locations surveyed on site by Geocomp Consulting pty ltd on 27/10/21
Camera:
Canon EOS 5Ds Digital SLR
Camera lens:
Canon EF 50mm f/1.8 USM

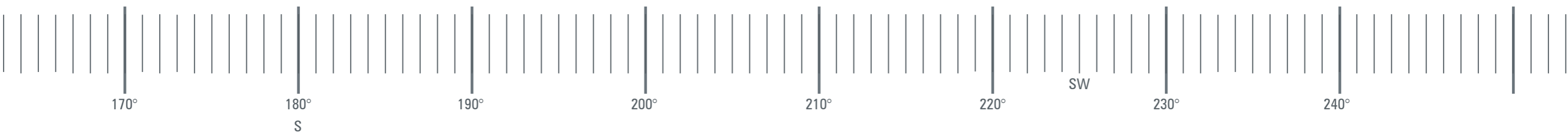
Photograph taken:
14:56pm on 27/10/21
Photo taken at:
160cm above ground level
View location 19:
e: 516388.5562
n: 5752060.5130
rl: 8.335AHD
Approx distance to closest turbine:
31062m

Project ref: 2019/0520
Dwg no.: VIA-094
Date: 03/02/26
Revision: P9

Hansen Partnership Pty Ltd
Melbourne | Byron Bay | Vietnam
Level 10, 150 Lonsdale Street
Melbourne vic 3000
T 61 3 9654 8844 **F** 61 3 9654 8088
E info@hansenpartnership.com.au
W hansenpartnership.com.au



Figure 151 View location 19: Photomontage view – 350-metre tip height parameter



**View Location 19 - the lookout near Seaspray Surf Life Saving Club
- Facing south towards proposed turbines.**

Photomontage created by:
OZ - 3D Visualizer
Images created using:
3ds max 2024, Vray 6, autocad 2023, adobe photoshop, illustrator & indesign cc 2024
Method used to collect relevant data:
Photo locations surveyed on site by Geocomp Consulting pty ltd on 27/10/21
Camera:
Canon EOS 5Ds Digital SLR
Camera lens:
Canon EF 50mm f/1.8 USM

Photograph taken:
14:56pm on 27/10/21
Photo taken at:
160cm above ground level

View location 19:
e: 516388.5562
n: 5752060.5130
rl: 8.335AHD

Approx distance to closest turbine
31062m

Project ref: 2019/0520
Dwg no.: VIA-095
Date: 03/02/26
Revision: P9

Hansen Partnership Pty Ltd
Melbourne | Byron Bay | Vietnam
Level 10, 150 Lonsdale Street
Melbourne vic 3000
T 61 3 9654 8844 **F** 61 3 9654 8088
E info@hansenpartnership.com.au
W hansenpartnership.com.au

View location 19 - Impact assessment

The assessments of the seascape, landscape, and visual impact of the proposed project infrastructure (271-metre and 350-metre tip height parameters) at view location 19 are summarised in Tables 48 and 49 below.

Table 48 271-metre tip height parameter impact assessment - view location 19

Assessment criteria	Assessment ranking	Rationale
Landscape value/Seascape value	High (state significance)	The view location is within the 'Ninety Mile Coast' landscape character area, for which the assessed landscape/seascape value is 'high (state significance)'
Magnitude of visibility	Low	Photomontage imagery prepared to represent the visual impact at this view location (refer to Figure 149) illustrates that the magnitude of visibility of the proposed project infrastructure is 'low'.
Nature of receptors	Moderate	The view location is in the lookout near Seaspray Surf Life Saving Club situated towards the southern end of the pristine Ninety Mile Beach. Receptors would typically be visitors visiting recognised landscapes or attractions.
Number of receptors	High	The view location is within Ninety Mile Beach, a recognised scenic destination, the number of receptors is assumed to be high.
Frequency	Low	Individual receptors are assumed to visit this view location infrequently due to its access and location.
Duration	Moderate	The duration of stay at this view location is assumed to be moderate.
Receptor sensitivity	Moderate	Receptor sensitivity at this view location is assessed as 'moderate'.
Overall impact assessment	Moderate	

Table 49 350-metre tip height parameter impact assessment - view location 19

Assessment criteria	Assessment ranking	Rationale
Landscape value/Seascape value	High (state significance)	The view location is within the 'Ninety Mile Coast' landscape character area, for which the assessed landscape/seascape value is 'high (state significance)'
Magnitude of visibility	Moderate	Photomontage imagery prepared to represent the visual impact at this view location (refer to Figure 151) illustrates that the magnitude of visibility of the proposed project infrastructure is 'moderate'.
Nature of receptors	Moderate	The view location is in the lookout near Seaspray Surf Life Saving Club situated towards the southern end of the pristine Ninety Mile Beach. Receptors would typically be visitors visiting recognised landscapes or attractions.
Number of receptors	High	The view location is within Ninety Mile Beach, a recognised scenic destination, the number of receptors is assumed to be high.
Frequency	Low	Individual receptors are assumed to visit this view location infrequently due to its access and location.
Duration	Moderate	The duration of stay at this view location is assumed to be moderate.
Receptor sensitivity	Moderate	Receptor sensitivity at this view location is assessed as 'moderate'.
Overall impact assessment	Moderate	

Anticipated impact

The final impact assessments for view location 19 - determined based on landscape/seascape value, the magnitude of visibility of the proposed project infrastructure, and receptor sensitivity for both the 271-metre and 350-metre tip height parameters are assessed as 'moderate'.

9.5.20 View location 20 - Foster North Lookout (Impact ID: SLVR09)

Location

View location 20 is at Foster North Lookout. The view is oriented to the south-east towards the proposed offshore wind farm project infrastructure, with the closest turbines being approximately 54.5 kilometres from the view location.

Rationale for selection

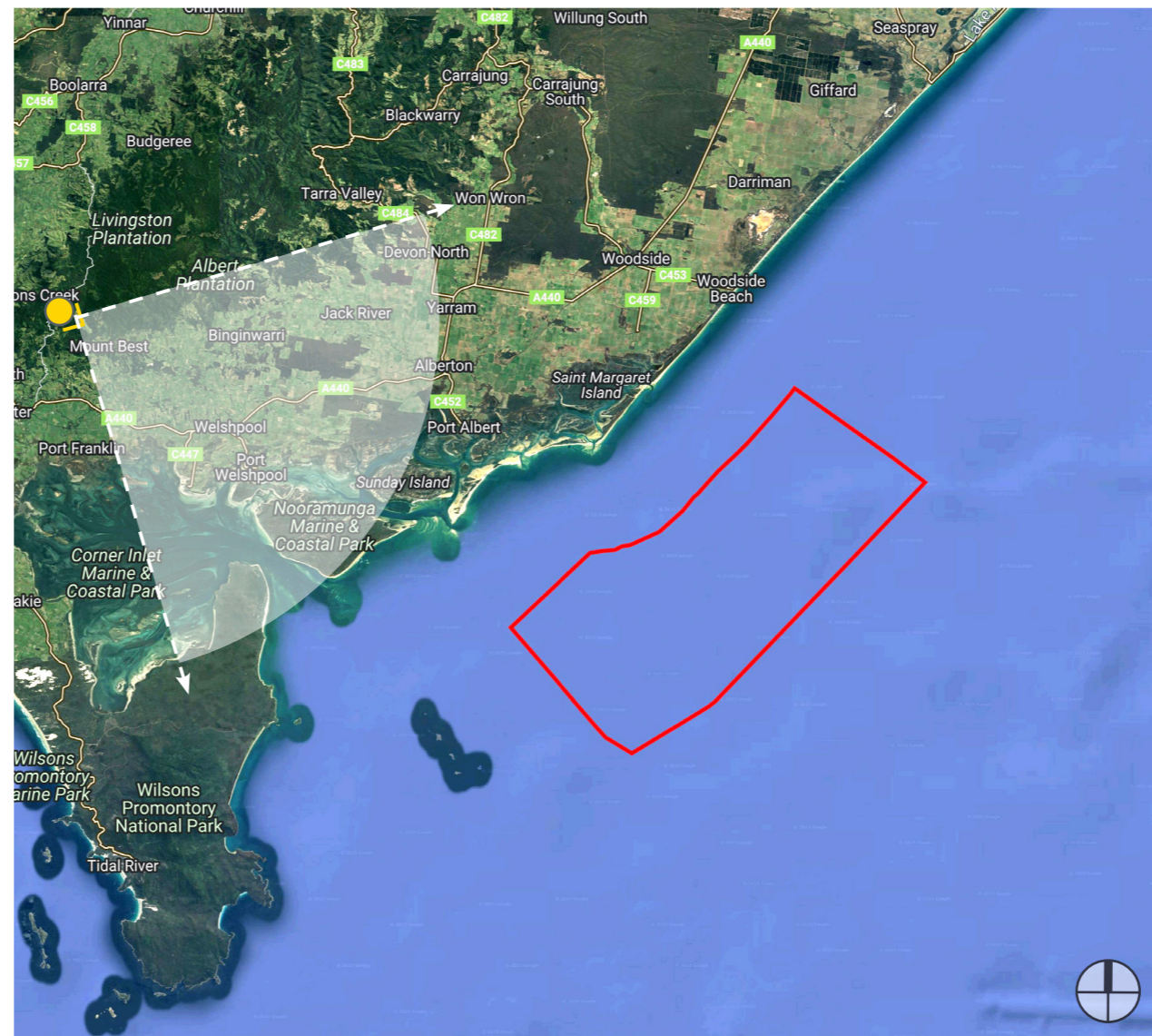
The view location is within the potential viewshed of the proposed project infrastructure (refer to mapping in Section 9.2) and is considered to be representative of views from proximate public viewpoints towards the proposed offshore wind farm and transmission infrastructure from Foster North.

View location 20 - Existing view

The existing view is in a rural context, with scattered tree and power lines being visible structures. The view is from the high point looking to the Bass Strait across Corner Inlet to the northern peaks of Wilsons Promontory National Park.

View location 20 - Photomontage views

Photomontage views of 271-metre and 350-metre turbine configurations exhibit a minimal change to the existing view, as offshore wind farm infrastructure (which is located approximately 54.5 kilometres from the viewing location) is almost entirely screened by existing elements in the view, with a small number of turbines visible, and only in part where they are seen across Corner Inlet which forms the distant skyline.



 Camera location

Star of the South Offshore Wind Farm Seascape, Landscape & Visual Impact Assessment

View Location 20 - Existing view



Figure 152 View location 20: Existing view



View Location 20 - Foster North Lookout - Facing south-east towards proposed turbines.

Photomontage created by:
OZ - 3D Visualizer

Images created using:
3ds max 2024, Vray 6, autocad 2023, adobe photoshop, illustrator & indesign cc 2024

Method used to collect relevant data:
Photo locations obtained on site by Geocomp Consulting pty ltd on 09/08/22

Camera:
Canon EOS 5Ds Digital SLR

Camera lens:
Canon EF 50mm f/1.8 USM

Photograph taken:
03.39pm on 09/08/22

View location 20:
e: 428186.8080
n: 5724903.4140
rl: 299.6400

Project ref: 2019/0520
Dwg no.: VIA-096
Date: 03/02/26
Revision: P9

Hansen Partnership Pty Ltd
Melbourne | Byron Bay | Vietnam
Level 10, 150 Lonsdale Street,
Melbourne vic 3000
T 61 3 9654 8844 **F** 61 3 9654 8088
E info@hansenpartnership.com.au
W hansenpartnership.com.au

Star of the South Offshore Wind Farm Seascape, Landscape & Visual Impact Assessment

View Location 20 - Wireframe view - 271 meters tip height parameter



Figure 153 View location 20: Wireframe view – 271-metre tip height parameter



View Location 20 - Foster North Lookout - Facing south-east towards proposed turbines.

Photomontage created by:
OZ - 3D Visualizer

Images created using:
3ds max 2024, Vray 6, autocad 2023, adobe photoshop, illustrator & indesign cc 2024

Method used to collect relevant data:
Photo locations obtained on site by Geocomp Consulting pty ltd on 09/08/22

Camera:
Canon EOS 5Ds Digital SLR

Camera lens:
Canon EF 50mm f/1.8 USM

Photograph taken:
03.39pm on 09/08/22

View location 20:
e: 428186.8080
n: 5724903.4140
rl: 299.6400

Approx distance to closest turbine
54633m

Project ref: 2019/0520
Dwg no.: VIA-097
Date: 03/02/26
Revision: P9

Hansen Partnership Pty Ltd
Melbourne | Byron Bay | Vietnam
Level 10, 150 Lonsdale Street,
Melbourne vic 3000
T 61 3 9654 8844 **F** 61 3 9654 8088
E info@hansenpartnership.com.au
W hansenpartnership.com.au

Star of the South Offshore Wind Farm Seascape, Landscape & Visual Impact Assessment

View Location 20 - Photomontage view - 271 meters tip height parameter



Figure 154 View location 20: Photomontage view – 271-metre tip height parameter



View Location 20 - Foster North Lookout - Facing south-east towards proposed turbines.

Photomontage created by:
OZ - 3D Visualizer

Images created using:
3ds max 2024, Vray 6, autocad 2023, adobe photoshop, illustrator & indesign cc 2024

Method used to collect relevant data:
Photo locations obtained on site by Geocomp Consulting pty ltd on 09/08/22

Camera:
Canon EOS 5Ds Digital SLR

Camera lens:
Canon EF 50mm f/1.8 USM

Photograph taken:
03.39pm on 09/08/22

View location 20:
e: 428186.8080
n: 5724903.4140
rl: 299.6400

Approx distance to closest turbine:
54633m

Project ref: 2019/0520
Dwg no.: VIA-098
Date: 03/02/26
Revision: P9

Hansen Partnership Pty Ltd
Melbourne | Byron Bay | Vietnam
Level 10, 150 Lonsdale Street,
Melbourne vic 3000
T 61 3 9654 8844 **F** 61 3 9654 8088
E info@hansenpartnership.com.au
W hansenpartnership.com.au

Star of the South Offshore Wind Farm Seascape, Landscape & Visual Impact Assessment

View Location 20 - Wireframe view - 350 meters tip height parameter



Figure 155 View location 20: Wireframe view – 350-metre tip height parameter



View Location 20 - Foster North Lookout - Facing south-east towards proposed turbines.

Photomontage created by:
OZ - 3D Visualizer

Images created using:
3ds max 2024, Vray 6, autocad 2023, adobe photoshop, illustrator & indesign cc 2024

Method used to collect relevant data:
Photo locations obtained on site by Geocomp Consulting pty ltd on 09/08/22

Camera:
Canon EOS 5Ds Digital SLR

Camera lens:
Canon EF 50mm f/1.8 USM

Photograph taken:
03.39pm on 09/08/22

View location 20:
e: 428186.8080
n: 5724903.4140
rl: 299.6400

Approx distance to closest turbine
54436m

Project ref: 2019/0520
Dwg no.: VIA-099
Date: 03/02/26
Revision: P9

Hansen Partnership Pty Ltd
Melbourne | Byron Bay | Vietnam
Level 10, 150 Lonsdale Street,
Melbourne vic 3000
T 61 3 9654 8844 **F** 61 3 9654 8088
E info@hansenpartnership.com.au
W hansenpartnership.com.au

Star of the South Offshore Wind Farm Seascape, Landscape & Visual Impact Assessment

View Location 20 - Photomontage view - 350 meters tip height parameter



Figure 156 View location 20: Photomontage view – 350-metre tip height parameter



View Location 20 - Foster North Lookout - Facing south-east towards proposed turbines.

Photomontage created by:
OZ - 3D Visualizer

Images created using:
3ds max 2024, Vray 6, autocad 2023, adobe photoshop, illustrator & indesign cc 2024

Method used to collect relevant data:
Photo locations obtained on site by Geocomp Consulting pty ltd on 09/08/22

Camera:
Canon EOS 5Ds Digital SLR

Camera lens:
Canon EF 50mm f/1.8 USM

Photograph taken:
03.39pm on 09/08/22

View location 20:
e: 428186.8080
n: 5724903.4140
rl: 299.6400

Approx distance to closest turbine:
54436m

Project ref: 2019/0520
Dwg no.: VIA-100
Date: 03/02/26
Revision: P9

Hansen Partnership Pty Ltd
Melbourne | Byron Bay | Vietnam
Level 10, 150 Lonsdale Street,
Melbourne vic 3000
T 61 3 9654 8844 **F** 61 3 9654 8088
E info@hansenpartnership.com.au
W hansenpartnership.com.au

View location 20 - Impact assessment

The assessments of the seascape, landscape, and visual impact of the proposed project infrastructure (271-metre and 350-metre tip height parameters) at view location 20 are summarised in Tables 50 and 51 below.

Table 50 271-metre tip height parameter impact assessment - view location 20

Assessment criteria	Assessment ranking	Rationale
Landscape value/Seascape value	Moderate	The view location is within the 'Strzelecki Ranges and Foothills' landscape character area, for which the assessed landscape/seascape value is 'moderate'.
Magnitude of visibility	Very low	Photomontage imagery prepared to represent the visual impact at this view location (refer to Figure 154) illustrates that the magnitude of visibility of the proposed project infrastructure is 'very low'.
Nature of receptors	High	The viewpoint is at the Foster North Lookout, where receptors typically include visitors to the designated scenic lookout and nearby residents.
Number of receptors	Moderate	The view location is within a recognised scenic destination. The number of receptors is assumed to be moderate.
Frequency	Very low	Individual receptors are assumed to visit this view location infrequently.
Duration	Low	View location is at Foster North Lookout, where is short stay lookout, assumed to have a low duration of visitation.
Receptor sensitivity	Moderate	Receptor sensitivity at this view location is assessed as moderate'.
Overall impact assessment	Low	

Table 51 350-metre tip height parameter impact assessment - view location 20

Assessment criteria	Assessment ranking	Rationale
Landscape value/Seascape value	Moderate	The view location is within the 'Strzelecki Ranges and Foothills' landscape character area, for which the assessed landscape/seascape value is 'moderate'.
Magnitude of visibility	Very low	Photomontage imagery prepared to represent the visual impact at this view location (refer to Figure 156) illustrates that the magnitude of visibility of the proposed project infrastructure is 'very low'.
Nature of receptors	High	The viewpoint is at the Foster North Lookout, where receptors typically include visitors to the designated scenic lookout and nearby residents.
Number of receptors	Moderate	The view location is within a recognised scenic destination. The number of receptors is assumed to be moderate..
Frequency	Very low	Individual receptors are assumed to visit this view location infrequently.
Duration	Low	View location is at Foster North Lookout, where is short stay lookout, assumed to have a low duration of visitation.
Receptor sensitivity	Moderate	Receptor sensitivity at this view location is assessed as moderate'.
Overall impact assessment	Low	

Anticipated impact

The final impact assessments for view location 20 - determined based on landscape/seascape value, the magnitude of visibility of the proposed project infrastructure, and receptor sensitivity for both the 271-metre and 350-metre tip height parameters are assessed as 'low'.

1 A Class Arterial Highway: In rural areas, these roads usually consist of a single carriageway with the majority of them having sealed shoulders and overtaking lanes in some sections. In metropolitan areas, these roads tend to be dual carriageway.

2 Annual average daily traffic (AADT): Traffic Volumes for Freeways and Arterial Roads. This data is provided by the Victorian Governments Department of Transport Open Data Hub, shows traffic volumes for freeways (excluding toll roads) and arterial roads in Victoria. The data provided is for the current year, with values derived from traffic surveys or estimates.